

A SELECTION OF HIGH STRANGENESS

The images in this gallery are somewhat unusual and for the most part contain anomalies a little different from the average phantom. Enjoy!

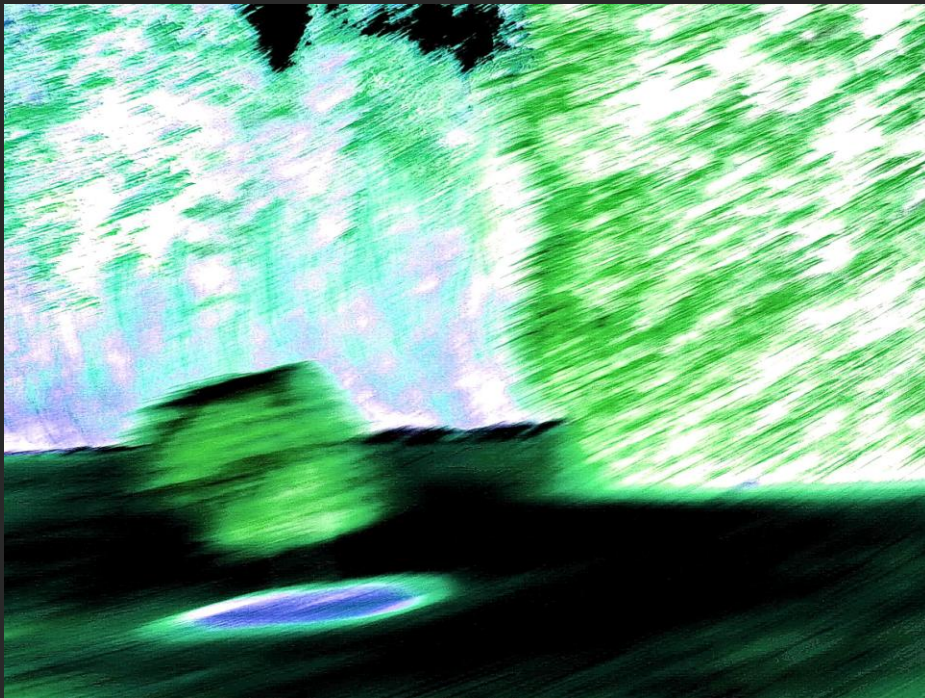
Rather than have a huge amount of edits for each photograph I've tried to keep them to a minimum in this gallery with the exception of two or three. Some of them contain far more than I have revealed here, especially 'The Royal Wedding' which can be seen in my CD/DVD 'TV Ghosts & ITC Experiments'.



Something with the appearance of a shrub seems to float above the ground in a Langley field. Of course, I can't be certain that it is actually a bush.



Edited for clarity, the object apparently casts a shadow directly beneath itself, and yet the photograph was taken fairly late in the day.



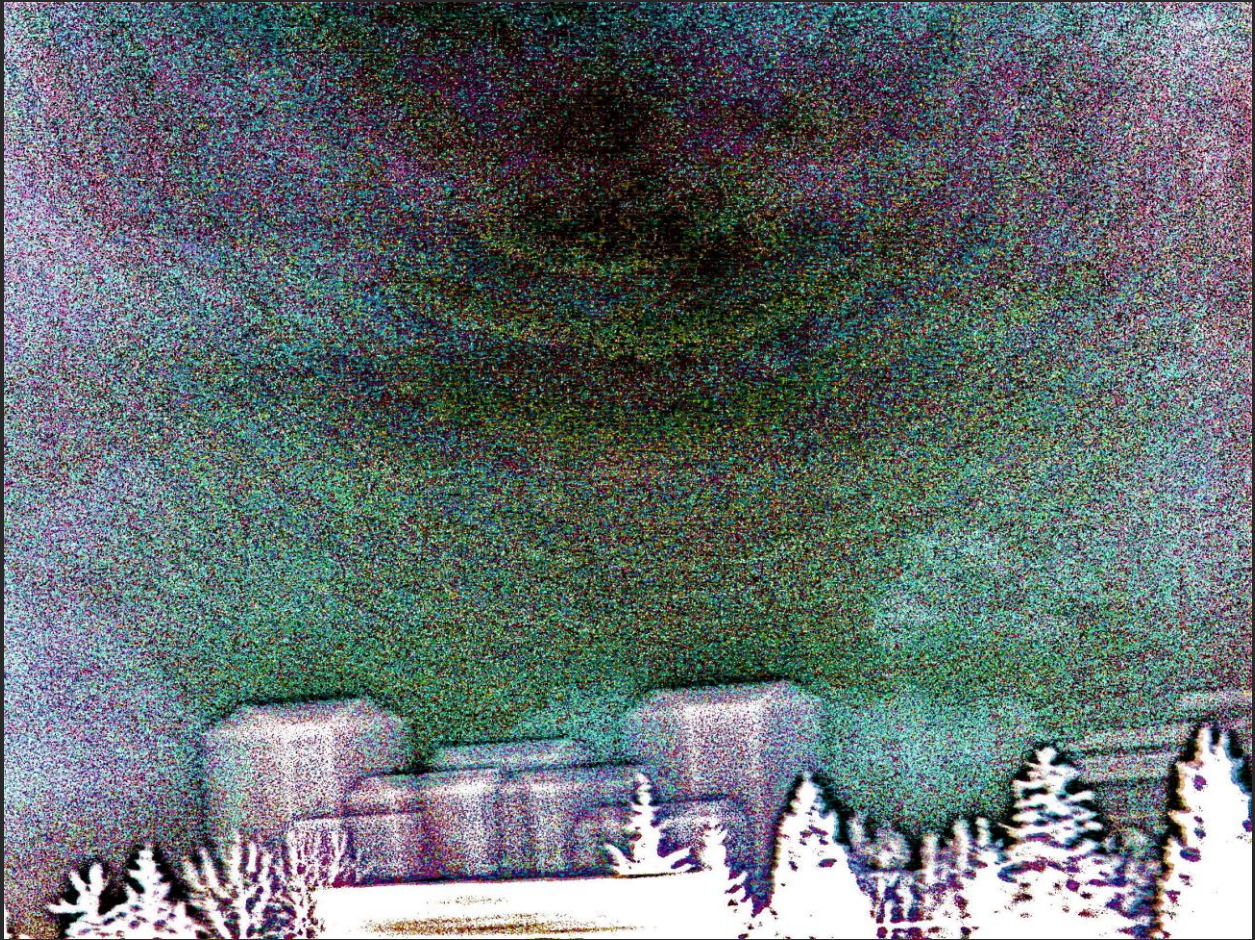
This is the (reverse color) negative version of this curious image, which I am completely unable to explain. I'm presenting this picture as a curiosity.



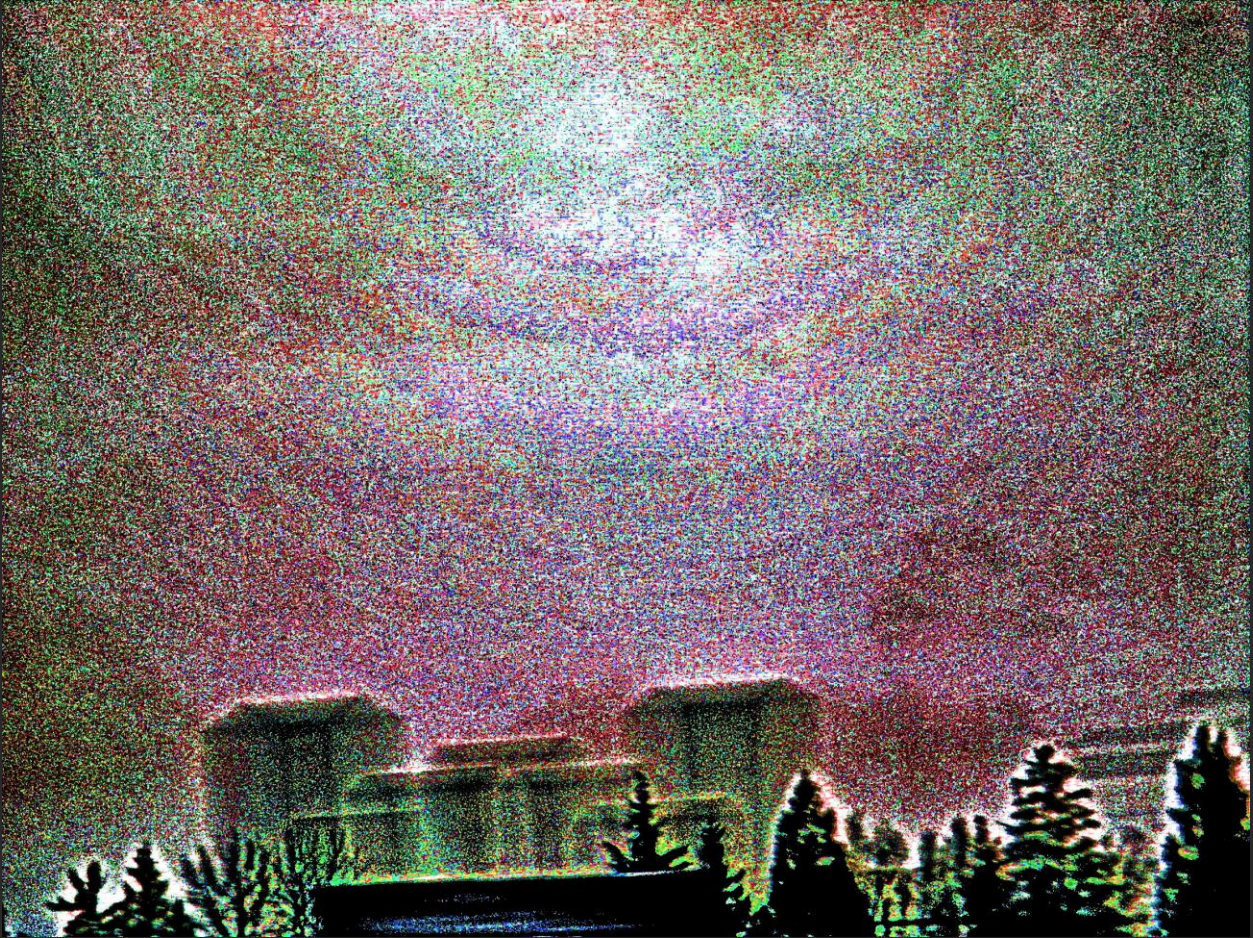
This picture was taken in Mission BC. This effect isn't due to an out-of-focus double image, and neither is it technically a spirit photo, even though it seems ghostly. The only real building in the image is represented by the black roofline among the trees at the bottom of the photograph. No such buildings exist anywhere in Mission – at least not yet.



The negative image clearly shows the outlines of these geometric constructs. I can see now that they extend to the extreme right of the photo.



I re-edited the negative extensively to further clarify these strange 'buildings'. The visible disturbance in the sky above this phenomena is something I've dealt with in my presentation 'Skyshots', which consists of photographic and text demonstrations of what is *really* going on in our skies. It may well be linked to what is manifesting here.



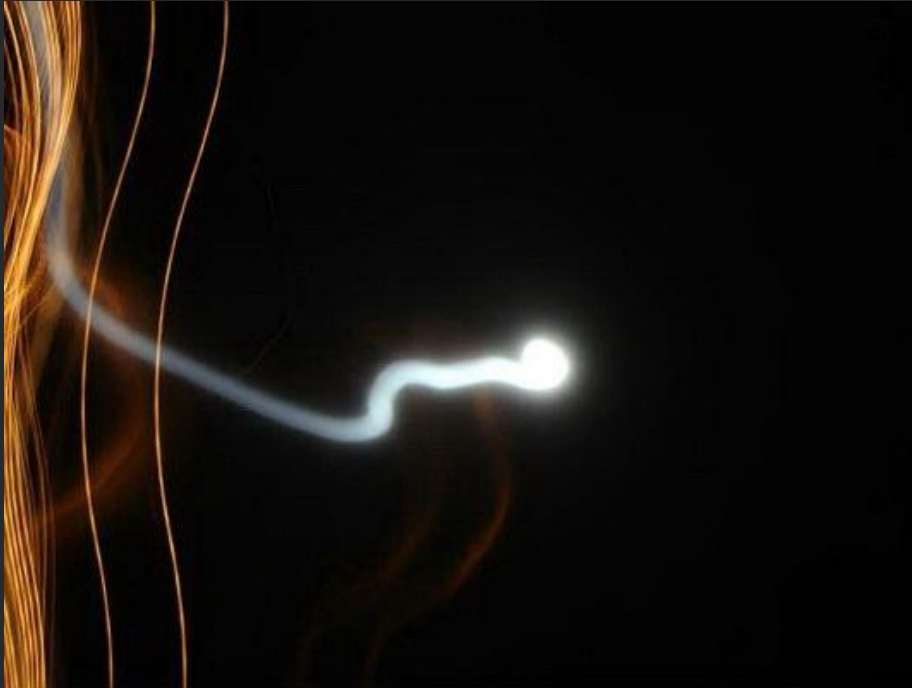
The positive image again. I wonder if the shadows directly behind the phantom buildings around the center of the photo could be trees not yet grown. I can't help thinking that we are looking at a Mission that exists in the future.



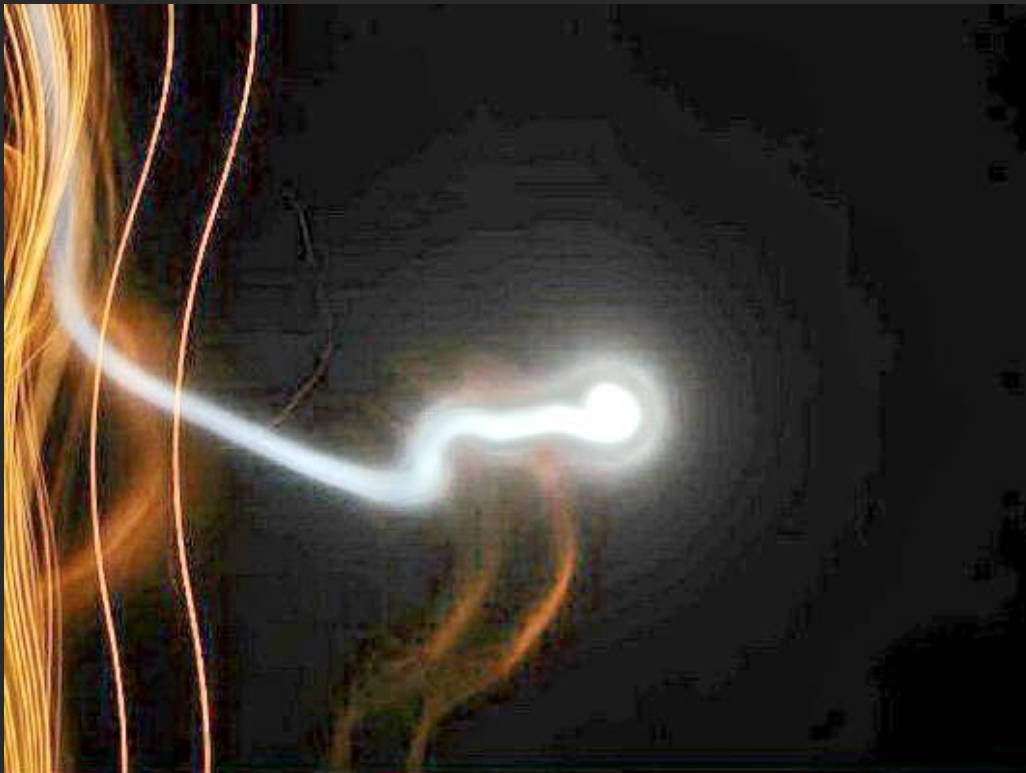
I snapped this picture outside a friend's house in Mission. It's hardly a lovely scene, with rooftops and wires strung everywhere, but I took it because I spotted something odd in the evening sky. The sun is setting, but that just makes the weird dark rays seen at approximate right angles to each other in the sky even stranger.



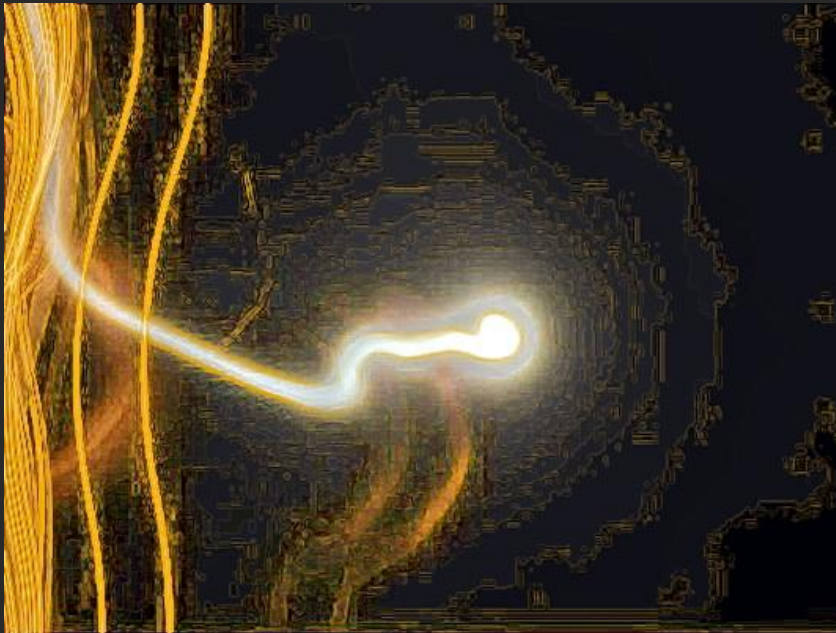
Here is the same photograph edited. This isn't a ghost photo either. It's a vivid image revealing an all too-human hand, I'm afraid. This is the Canadian government experimenting in our skies. It's occurring around the world today and if you wish to know more you will be able to see enough to convince you if you purchase a copy of 'Skyshots' on CD/DVD, as mentioned in the previous image of the ghostly buildings.



This is a photograph of the moon. The strange strand-like lights on the left are not my hair, which was tied back at the time



After I highlighted the photo more orange streaks became visible.



I sharpened the image. There was nothing in the sky except the moon when I took the photograph. If I had moved the camera, and there were lights in the picture other than the moon, then they would have followed the same path as the white light. I didn't move the camera and can't explain any of the orange marks.



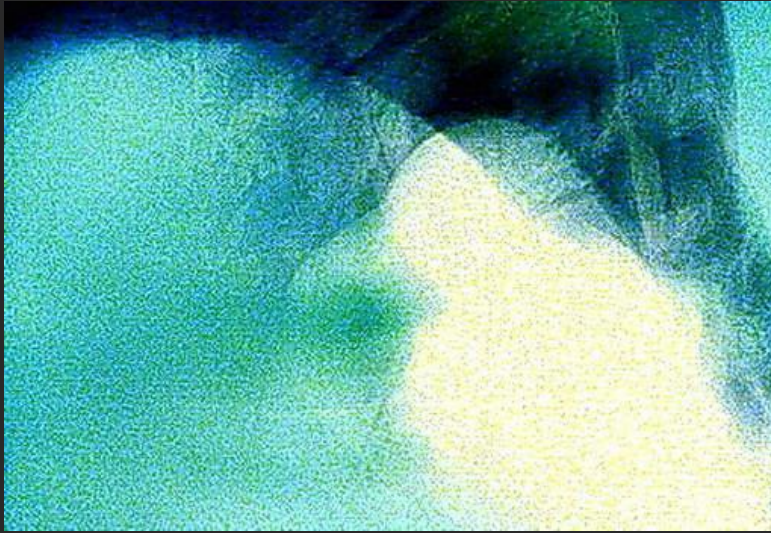
I took this picture of my daughter and her friend. As usual in photos I take with activity in them, the actual picture quality is awful. In the foreground is my daughter, although the picture is so obscured you can only see her red hair. She is facing to the right.



Lightened and sharpened, the image shows the strange speckles overlaying the bird, which is like a void. I've noticed this cut-out effect quite a few times over the last few years.



I've cropped her image out. Another face is superimposed over hers so there are actually two faces sharing the same place (there are more faces elsewhere in this photo but I won't detail them) and looking straight forward. It isn't very clear, but the image of the large black crow certainly is.



The negative image is included to show the crisp and concise lines of this anomaly.



Showing the crow and spirit face close up with my daughters face in misty profile; her features are interlocked almost perfectly with the shadow profile of the crow. As the crow is one of her totems, this image is understandable to me. I found this to be altogether a very unusual and interesting photograph.



Here's the first photograph I ever took directly from the TV screen. What you're looking at are part of the wedding ceremonies for Prince Charles and Camilla Parker Bowles. You can see them sitting together on the left, completely oblivious to the large and very angry looking face looming over the proceedings.



This reveals more clearly this terribly angry man, while obscuring the rest of the image. Note the man on the far right playing a musical instrument I can't identify. I don't believe belongs to the wedding proceedings, either. I go into this photograph in much greater detail in my CD/DVD 'TV Ghosts & ITC Experiments'.



I've outlined the image in black and his face is very clear. A lot of people think the man's eyes are closed, but they are actually wide open and he's actually looking upwards. He has extremely dark shadows under his eyes that give the false appearance of closed eyes and dark lashes. I think that the man on the far left playing an instrument belongs to an earlier time and place, which is fascinating.



The negative image is interesting also. I have had many comments on this picture. I took it when I was alone in my bedroom as described in the introduction for this gallery. Several people have asked me if it could be the reflection of someone in the room behind me, and one person insisted it was. I don't mean to appear rude, but wouldn't I notice if a large, angry, stranger were in my bedroom with me? Also, if you examine the photograph and also the negative version closely you will see that while this man's head is superimposed against the background of the image, part of the foreground, seen as black in this image, is in its turn superimposed over him. Noticing how often people will use the most illogical arguments to 'explain away' things they can't or don't wish to handle, I will neither indulge in conversation with nor answer emails from people who offer explanations and/or accusations that are unreasonable and based on nonsensical attempts to debunk something that they haven't properly thought through. I will, however, answer all reasonable questions to the best of my abilities.

I have no idea who this man is, and I have tried to find out. I don't know if he's dead or alive, or what time period he occupied. If anyone recognizes him I would be grateful if they would email me and let me know who he is. Terribly displeased at this wedding or not, I owe him a debt of gratitude because without this photograph I would never have begun photographing the 'TV ghosts' that you are viewing now.



This is an interesting picture as it points something out. Further edited to regain the features of those present and then outlined in white, the people physically present are solid looking with a lot of white, yellow or black. The apparitions appear in a shade of gray and are no longer seen in color as they have a lot less substance. There are other gray areas here which I edited at an earlier time, and they are full of tiny figures and scenes.



I cropped his head as seen here. Note the white over-exposed section visible on the TV screen that is partially covering his chin. He is actually behind the foreground of the photograph, and is obviously not a reflection.



The same scene with 'glowing edges' applied in a darker color. Note the straight horizontal lines behind him, and also the yellow-white smudge to the right of the face, roughly at the same level as the man's mouth and nose.



The face is in front of a separate indoor scene, probably connected with this man. What you see behind him on the right is a mantelpiece with a fire burning in it. I've edited this scene extensively, and the pictures, which include a Christmas tree and a woman with a small child, can be seen on my CD/DVD 'TV Ghosts & ITC Experiments'. There are actually many scenes concealed within this photograph.



Cropped and enlarged, this is the angry wedding ghost's face up close and personal.



Editing the image just slightly further is causing his face to dissolve and yet another scene, this one very tiny, to begin to appear, and it completely covers this image. If you look carefully you might be able to see the wealthy urban landscape of carefully tended and laid-out gardens and homes behind him. It would be most interesting to know this man's story.



I took this photograph from a window, so that's the edge of a roof you see on the left. I noticed a cloud with a big face in it. So naturally I wanted to know more.



Cropped out, the cloud is shaped exactly as though a male face were looking down on us. It's in partial profile, although the entire face is visible, and even includes what's meant to look like a hairstyle. I have to stress here that in this case the face you are looking at is neither a ghost, nor simulacra or even 'nature spirits making pictures for us' as so many naive people seem to think.

It's actually your very own government busy as usual (as is most of the planet right now) performing experiments, covert operations (such as Haarp and ELF technology) and aerosol spraying day and night. If you don't yet know what a **Chemtrail** is you can check the links area or Google the word. My CD/DVD '*skyshots*' illustrates visually and in vivid detail some of the operations taking place up there in our skies. The strange thing is that this is all taking place covertly, and yet the huge amount of available information as to what is really going on is relatively easy to locate, and stranger still, it's actually extremely noticeable above our heads – every single day. Photographing it is easy and editing it for extreme visibility is as well. So daren't anyone look up anymore??



I adjusted the exposure, contrast and color values and sharpened the image. Doing this, however, has enabled me to see partially some of the activity this 'cloud' is hiding. The eye on the left, which would be the face's right eye, is actually overshadowed by a dark oblong shape which certainly isn't natural. If you look closely at the picture for a moment you'll see many anomalous shapes that really don't belong in the sky at all.



Although I tinted this with the original intent of showing you the image in a flesh tone so that you could see the face more easily, it actually ended up pointing out the other strange shapes more clearly.



The final picture of this strange cloud filled with straight lines and right-angles. It's almost certainly manufactured as a backdrop for the threatening holographic image and a screen for nefarious projects that those in power feel they should keep from us. I have dozens of photographs of these cloud-faces, both human and animal, and hundreds with evidence of covert operations taking place directly above our heads.



I took a photograph of a local garden I like that has a stream running through it. When I looked at the picture I noticed that the little stream looked very weird. You can see the dark line of the stream-bank curving behind the trees, and some of the water running placidly beneath it. The strange thing is that a portion of the water seems to have risen and be flowing around three tree trunks about two feet off the ground. You can see where it seems to be pooling around the actual trunks, and I can't explain this.



Here I've outlined the image with 'glowing edges' in black to outline this strange-looking phenomenon. With this same technique applied in a paler color, this makes an eerie but interesting image seen below.

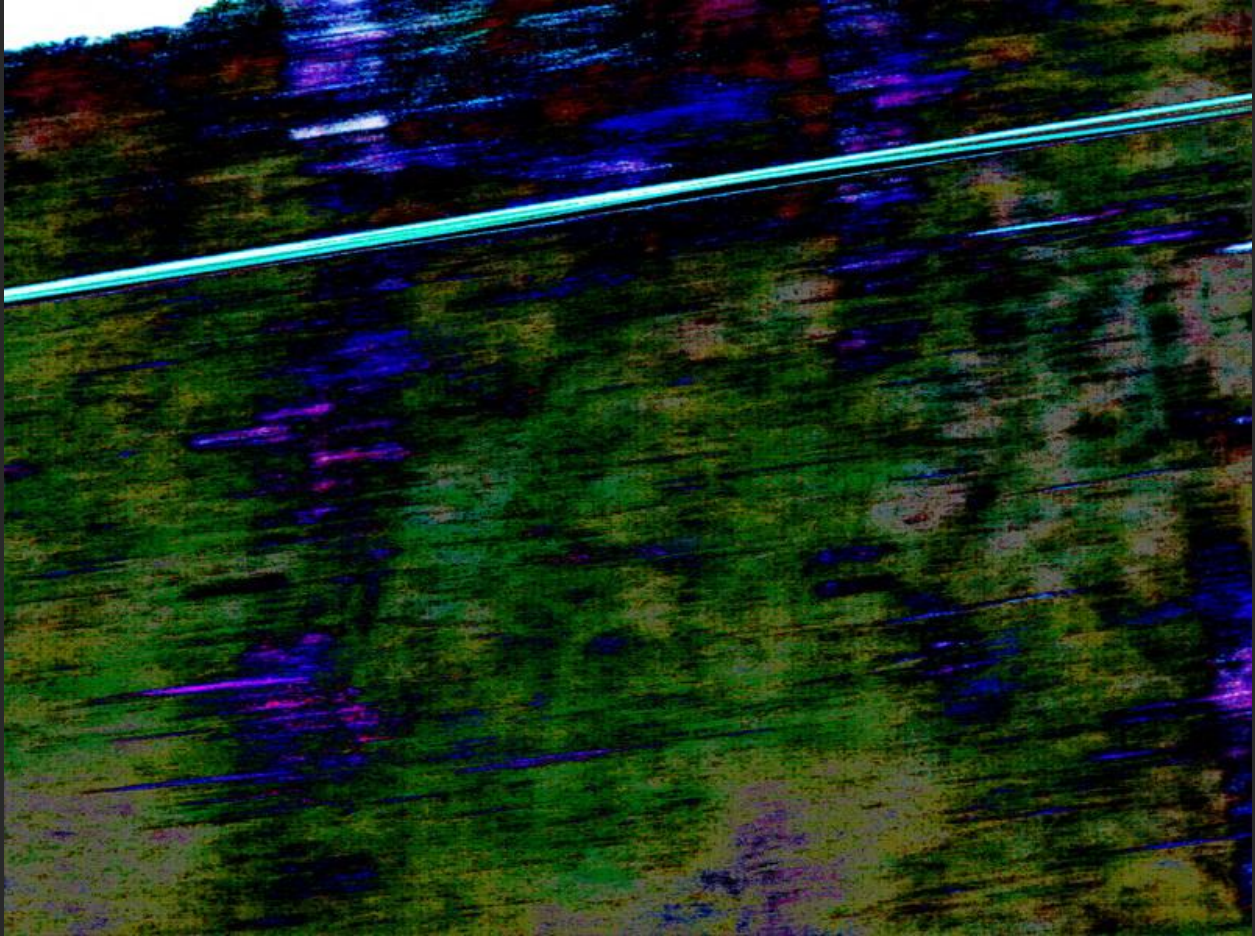




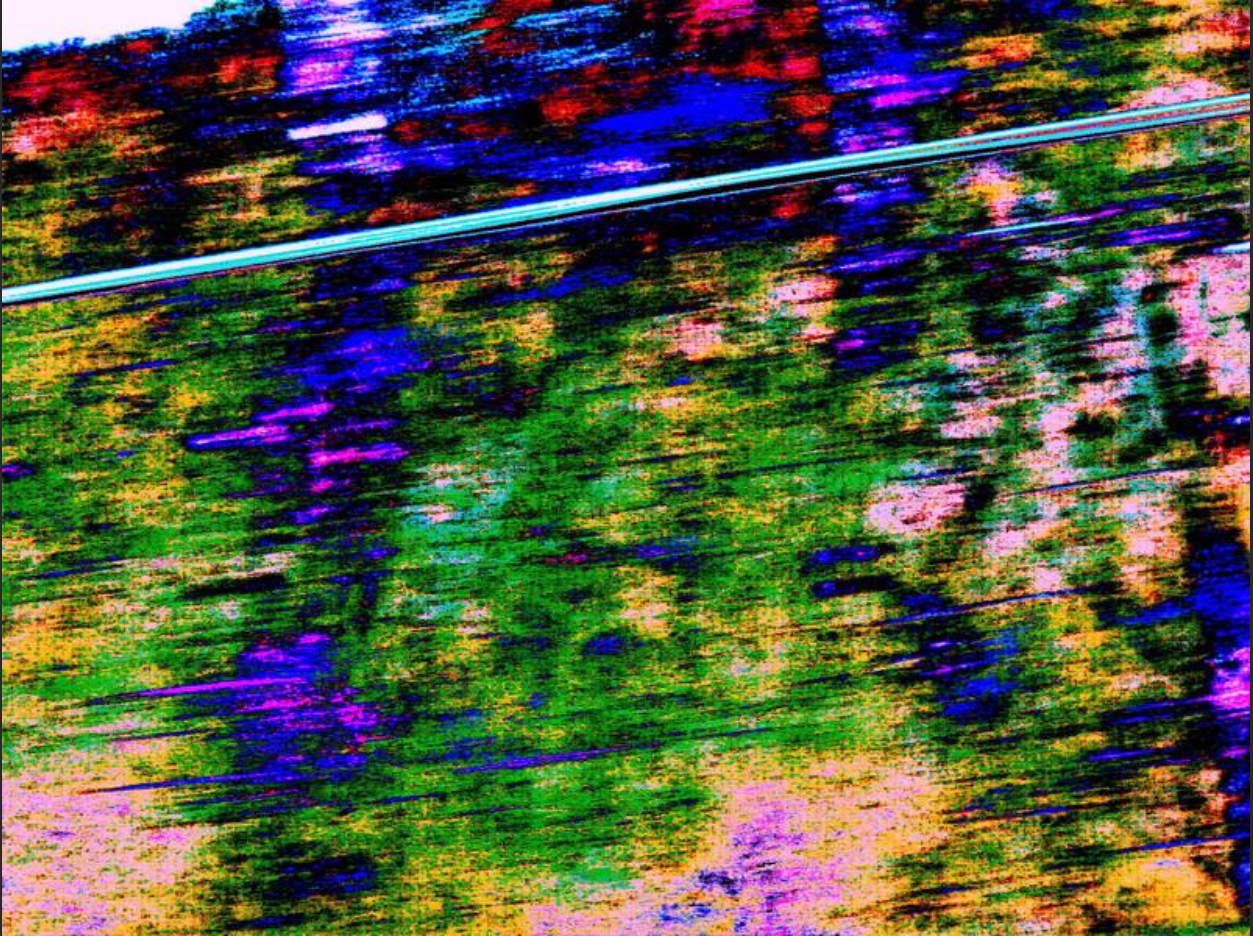
Taken of a view up a local hillside from across the road, there isn't much of the original landscape visible upon the image, as it is completely overlaid with psychic activity. The only thing normal in it is the electrical line strung across the photo. Many individual faces and figures in different sizes will become visible if you take the time to really study these next few pictures.



I've outlined this version lightly in a pale color which might help you identify certain aspects of the image. This is only one way of viewing it.



Using a curves program I adjusted it until I'd isolated certain factors, which now need lightening to be seen.



Lightened, I'm sure you can see some of the many faces looking back. I'm not going to point any details out in this photograph.



This is the clearest version that I edited, and the crowd of spirits that showed up to have their portrait taken reveals how we are truly not separated by very much. Spirits flock to those who have mediumistic abilities, such as the ones that allow me to take these photos. Many people think what I am doing is not possible. Clearly, it is.



These next images are based on two very interesting photographs. I'm not showing the entire pictures to protect the identities of the considerable amount of people in the room at the time they were taken. I was taking these photos in an attempt to receive images of two recently deceased people on behalf of living relatives. I did get a lot of phenomena, and I also noticed something very strange on two of the photos. What you are looking at is a cropped image of a section of room. Visible is the top of someone's head and a lot of assorted anomalies but what I want to show you is the little snaky-looking light coming down from the top of the image.



Here is the light phenomenon cropped out. It obviously isn't a phantom snake, and it looks suspiciously mechanical to me. The long bendable 'arm' is sectioned like a spine and what is that at the end of it?



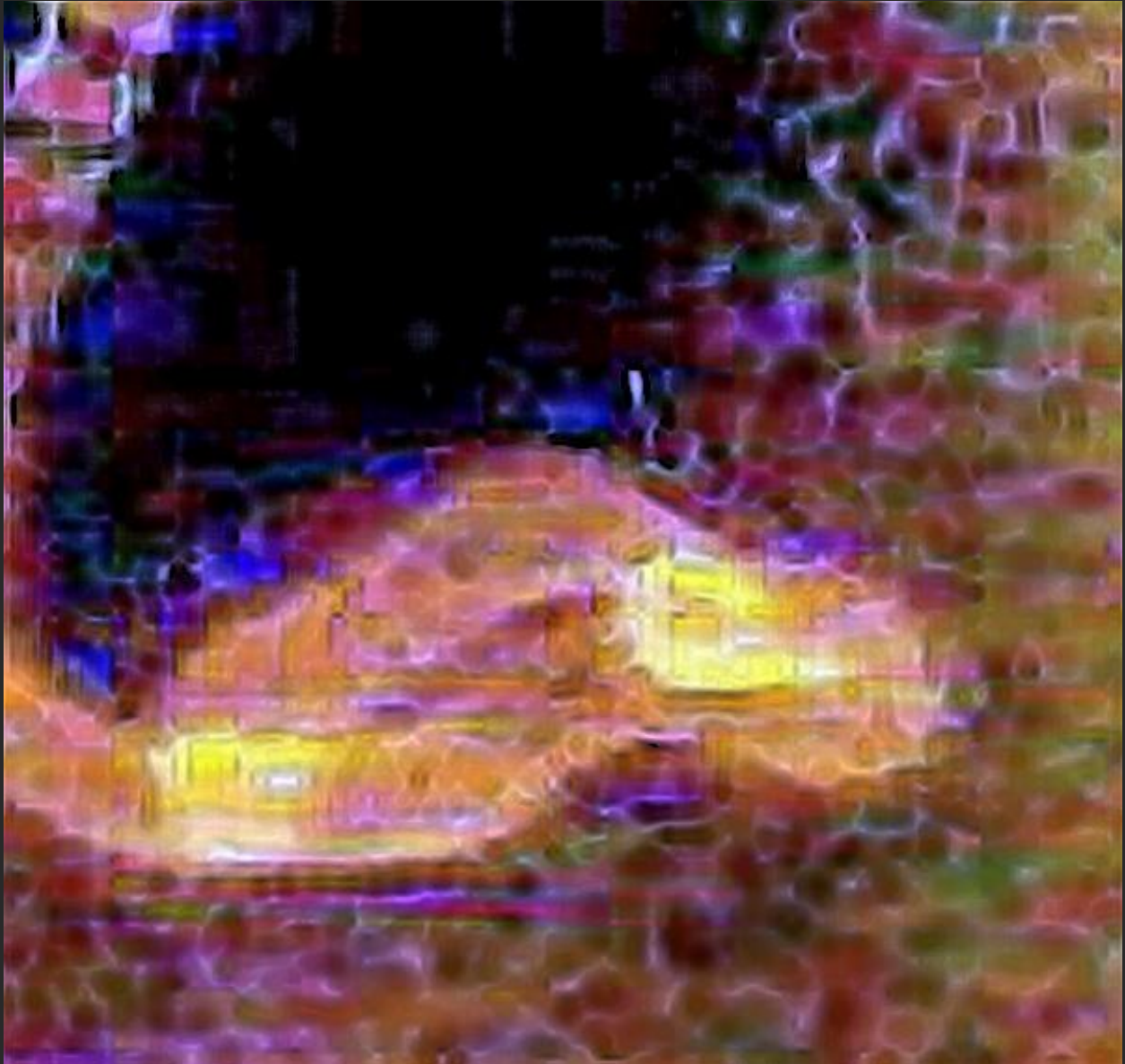
The image has been heavily sharpened so that you can see the construction of this article. It looks machined, and if it were physical in this dimension I'd expect it to be made of metal or plastic of some sort. The instrument at the end of the flexible arm, which is probably the point of the operation, looks suspiciously like so many others I have found in my photos that seem to include round objects like lenses on one side, often with an eye looking through, and a recording tape on the other.



Outlined, the contraption still looks like the spying device that it in reality is.



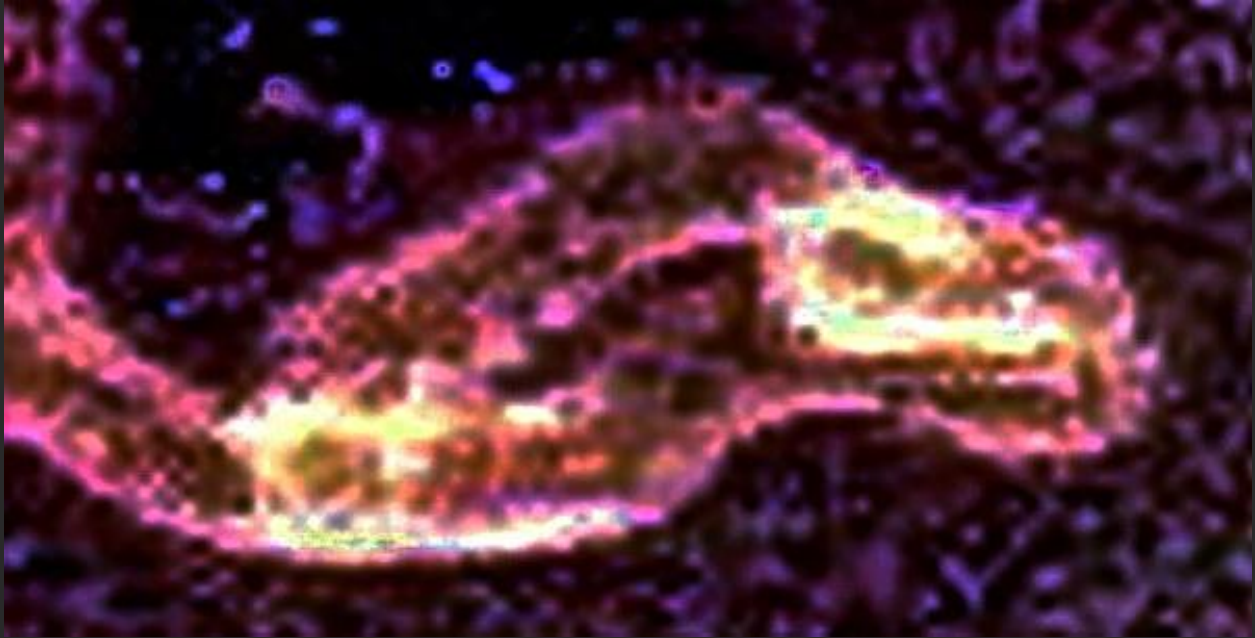
This is a negative image of the strange object so you can see its mechanized outlines.



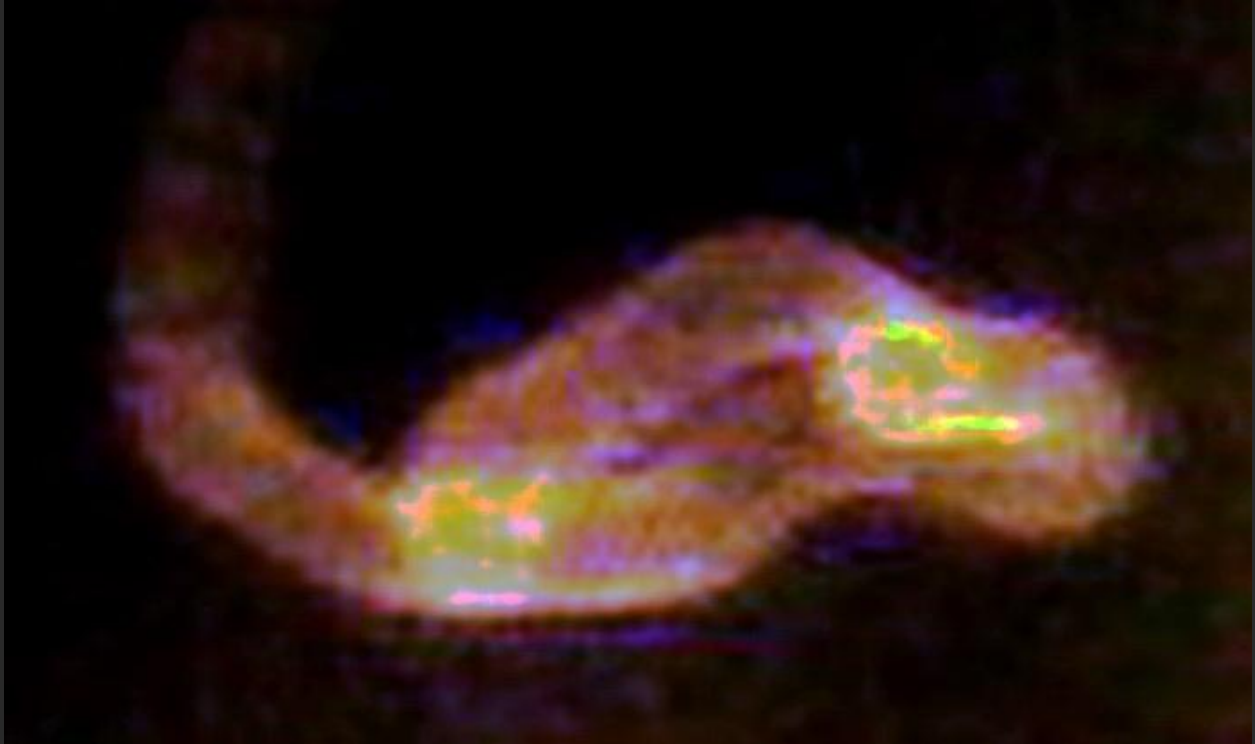
A close-up of the device revealing the tape on the right at the end of it designed to record the conversation. On the lower left side, another oblong shape in which is the round lens of what I believe to be a spy-cam. The strange pantograph-like parts that these instruments are set on seem to be hinged and devised to move.



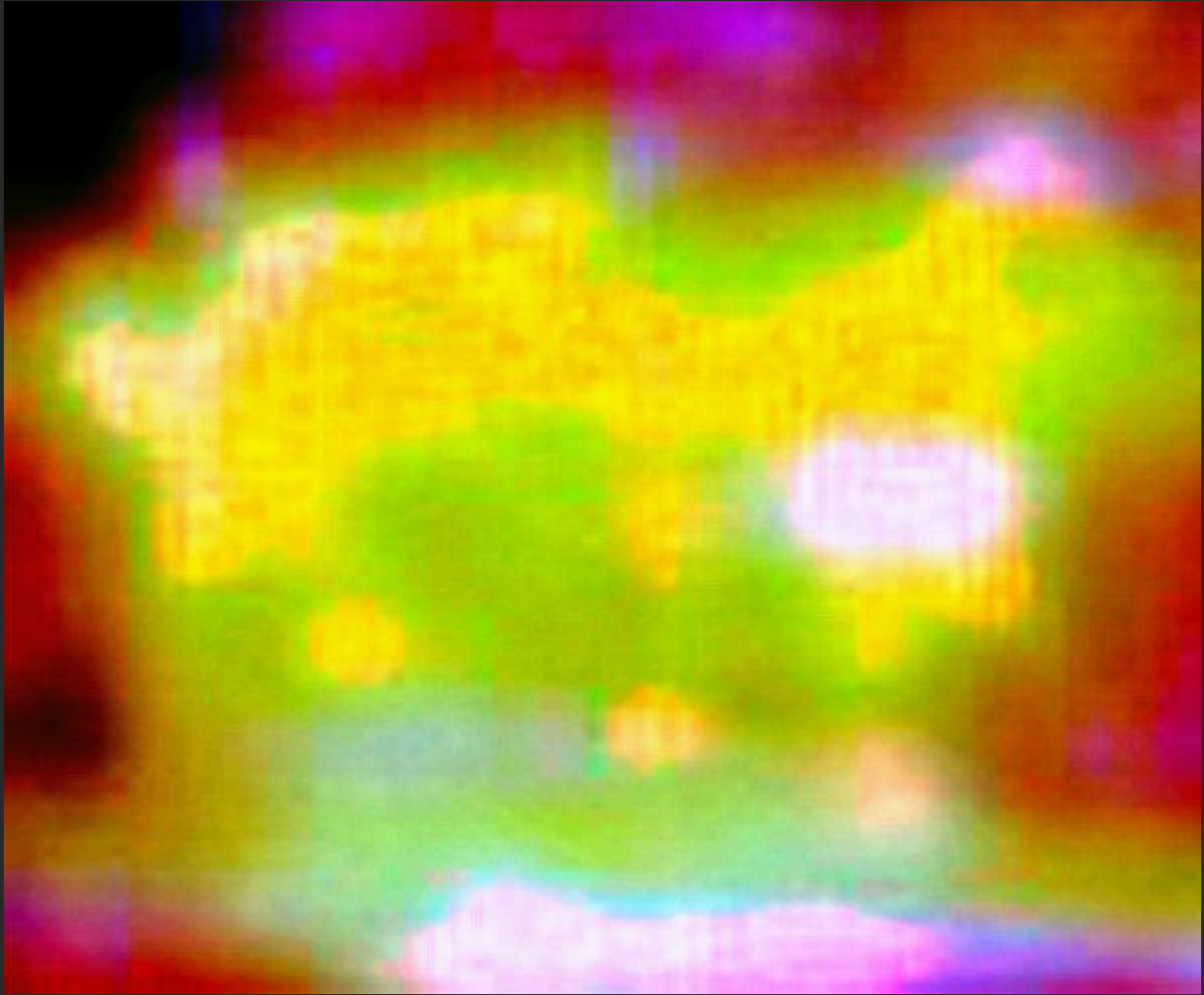
This version outlines some of the details more efficiently.



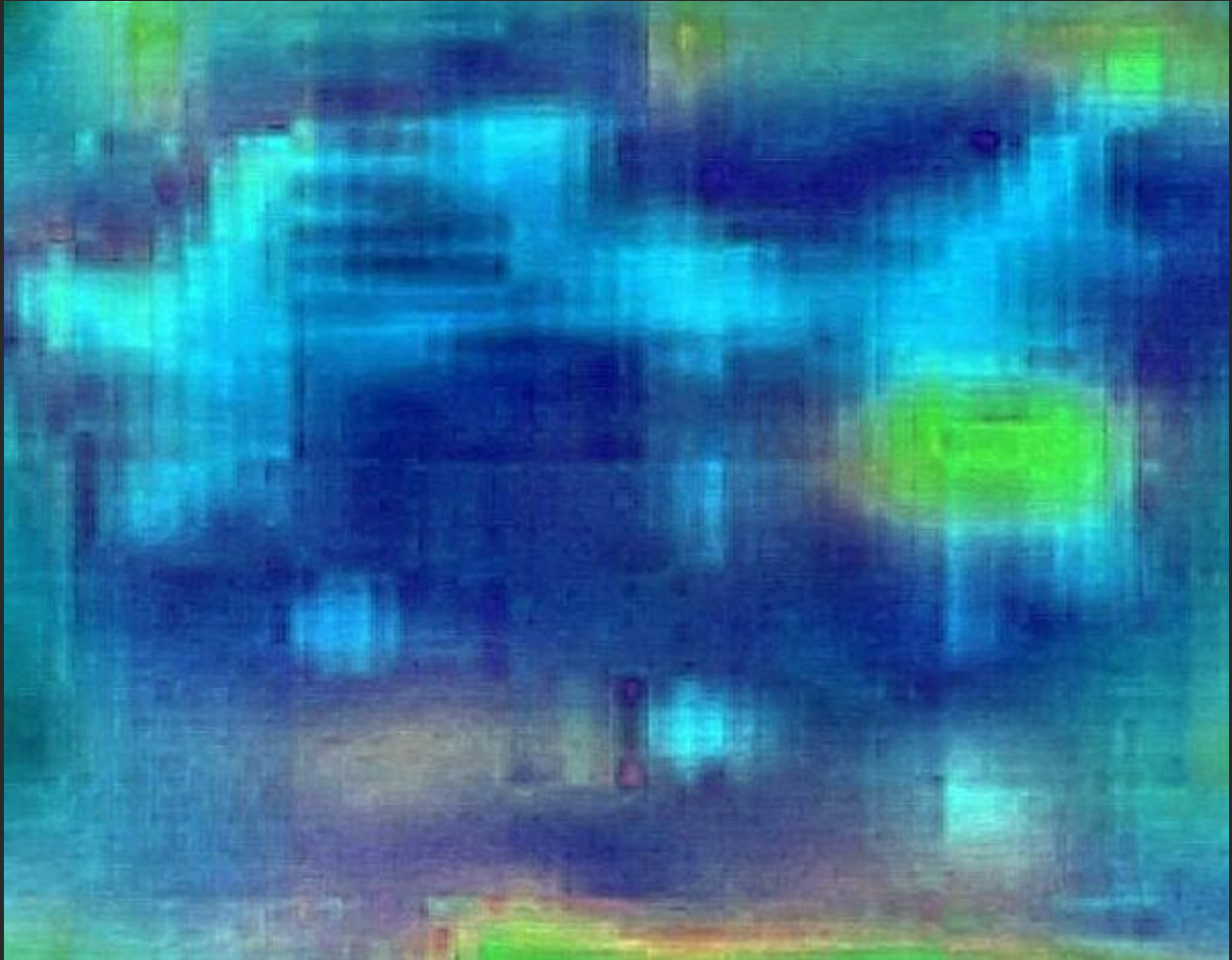
Details not visible before are lightly outlined here.



As I edit even further using a curves program the two recording areas break through into another scene, which is exactly what occurs in layered psychic phenomena in photographs. I'm just going to deal with the area at lower left.



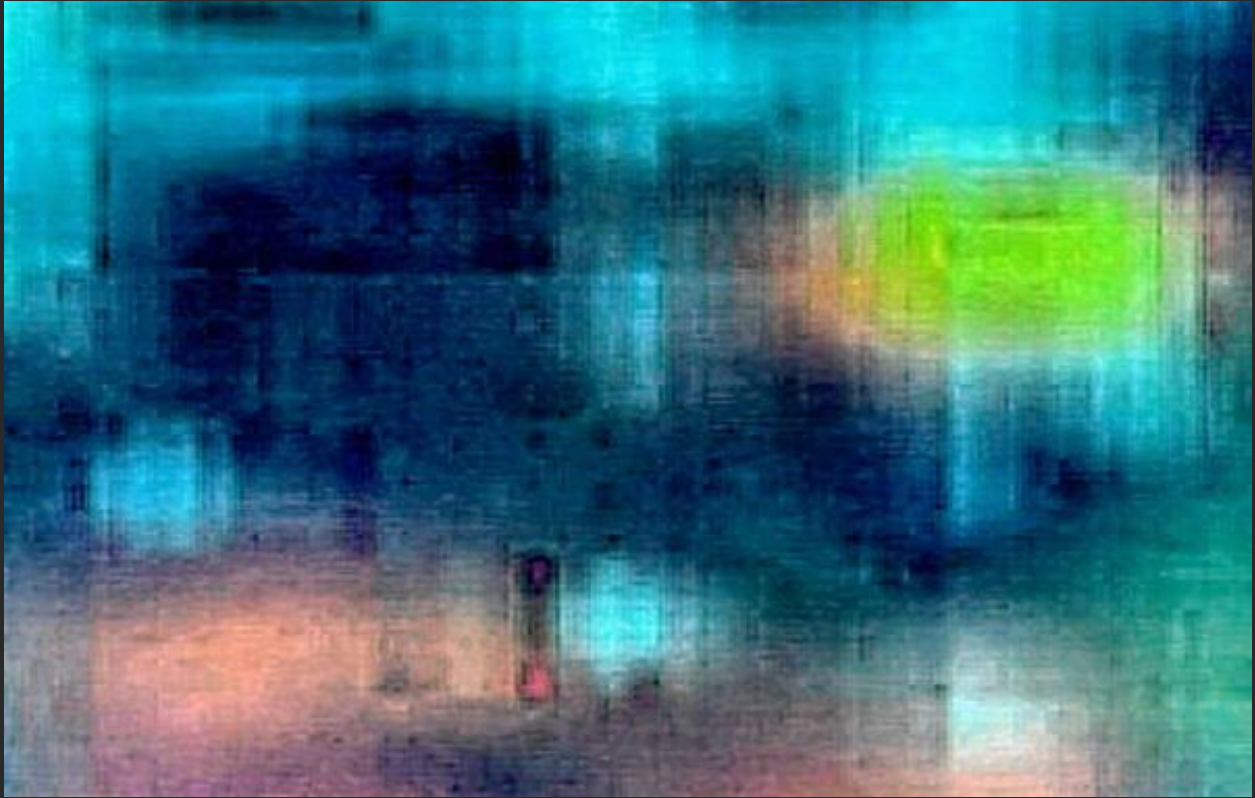
I've cropped the area where I believe the video recording device is. The scene is in the yellow area, colored green, and I'm going to extract it. Note the precision of the circular shapes.



Although the scene is hazy I can detect forms that are indicative of a genuine scene. Note the strange straight line with red shapes at either end of it near bottom center. Obviously I'm going to take a closer look.



Editing further and changing the color allows the scene to emerge further. It seems to be some kind of an office-type room with someone sitting in it looking this way.



Cropped again, I can see somebody sitting at a computer monitor looking this way. The very obvious computer monitor, a large old-fashioned one, is on the left, seen from the side. There also seems to be a recording tape-like object seen here in green-yellow on the right near the top, and a strange red slider that I pointed out previously such as you would see to adjust volume or similar.



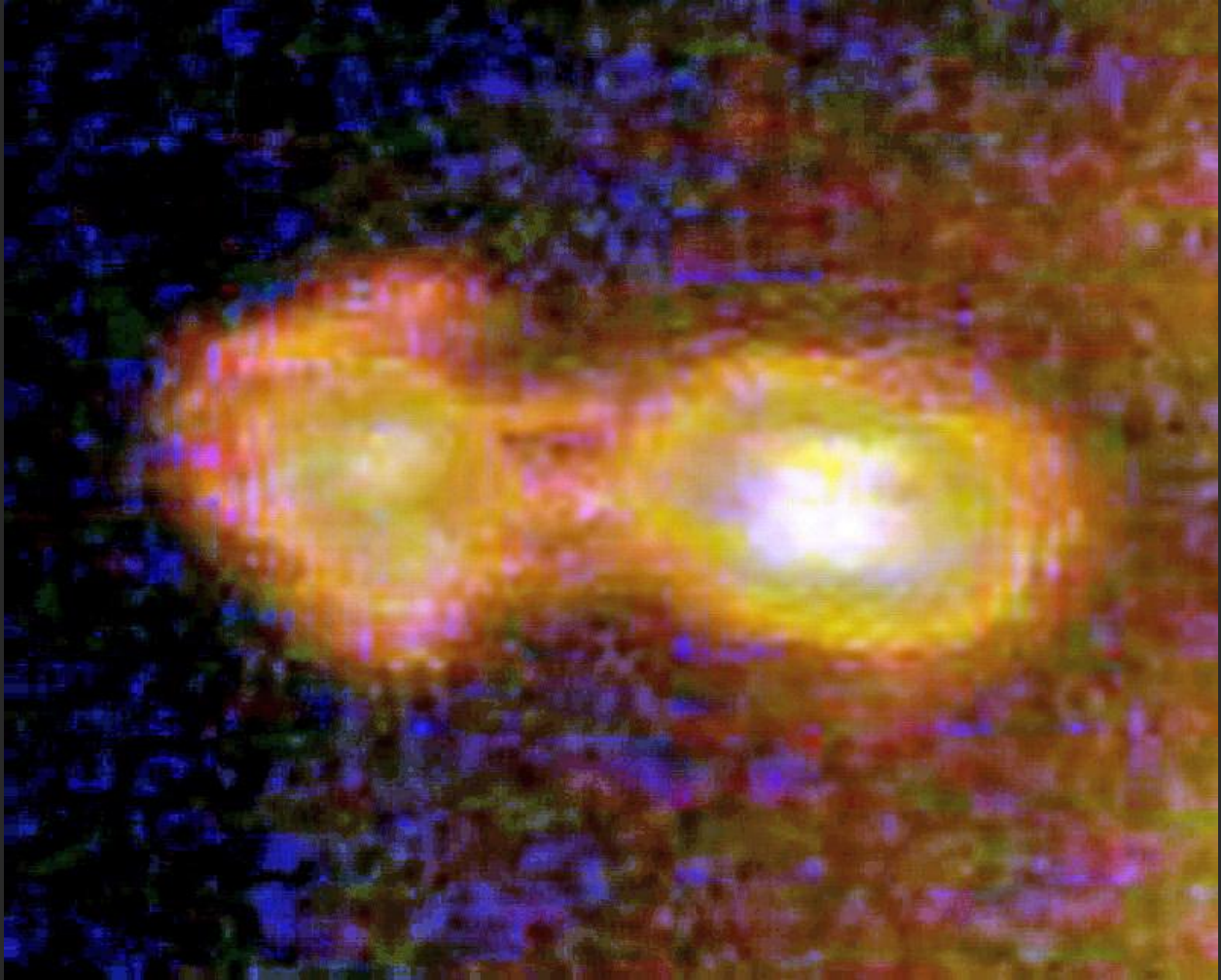
Close-up, a woman with dark hair and a fringe sits at the computer monitor seen on the left. Although the woman is also sitting sideways she is facing us, probably because she was monitoring my photography as I worked. I hope you can see this fairly clearly. She may think her operation is invisible, but I can see her, and now so can you. Now I'm going to show you something similar that I photographed the same evening within ten minutes of the picture you are viewing.



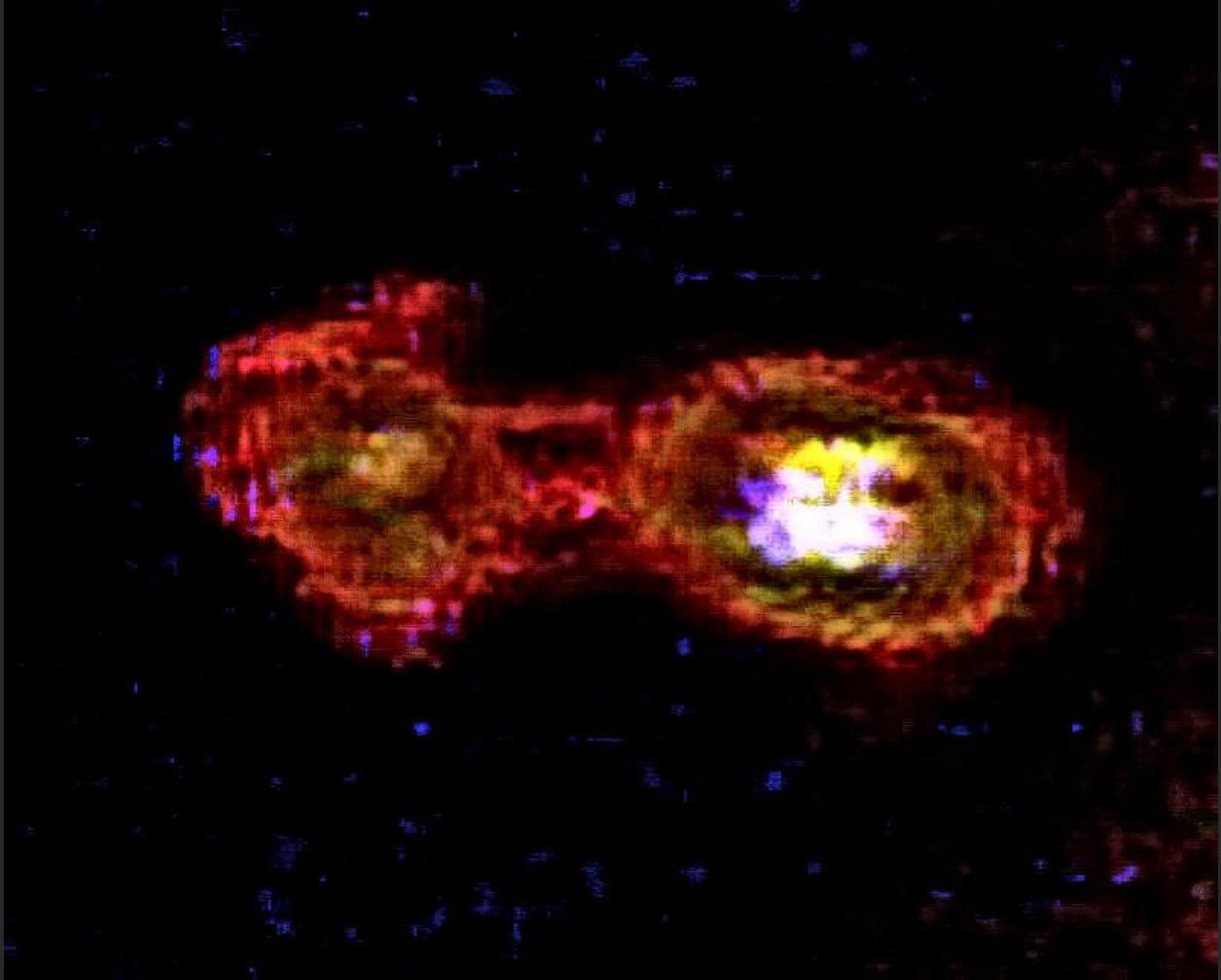
A second light in the air up high caught my attention. You can see it at the top. It's in almost the same position the last one was in.



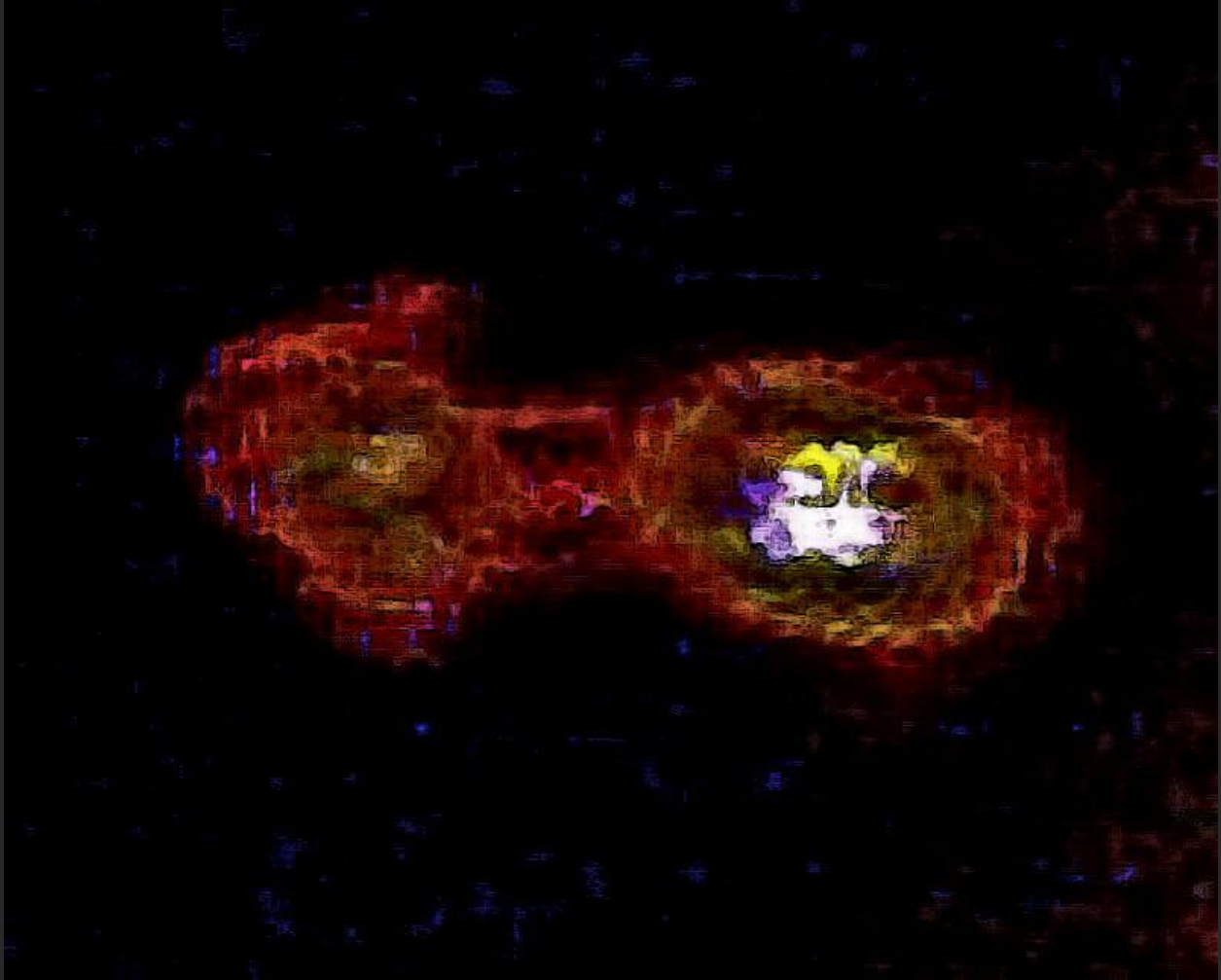
Cropped out, it's very hazy and unclear but already I can see it has some sort of internal structure, so it's interesting.



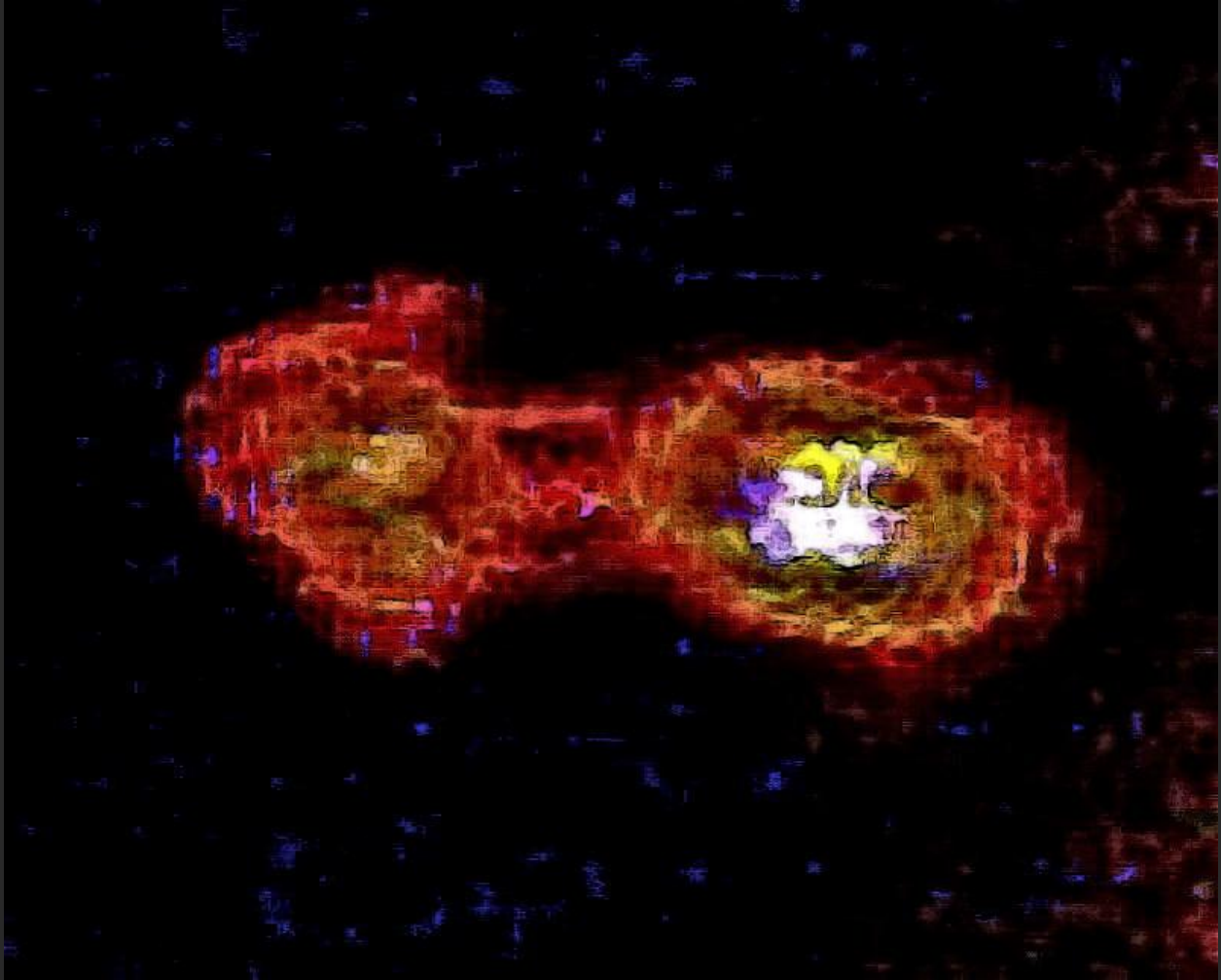
I can see that there's some sort of frame around this construct, and as usual, a round area seen on the left as viewed and oblong on the right. I can see vague shapes through the frames, which make them look very much like viewing glasses of some type. The violet light speckles are often present round the anomalies in my photos. This type of phenomena is discussed in my CD/DVD 'TV Ghosts & ITC Experiments'.



The two sides of this object seem to be connected by bridges of some sort, like eyeglasses. There's an oblong shape on the right and what looks like an amber-brown eye looking through the frame on the left.



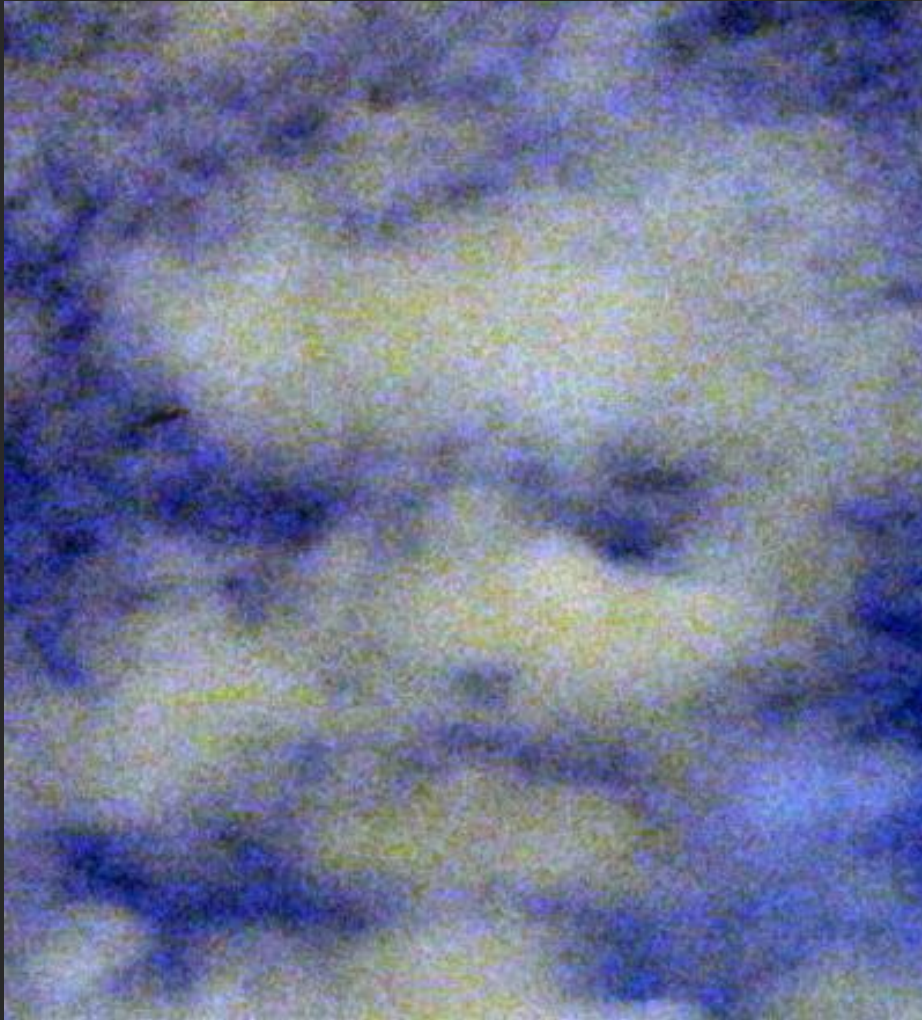
After editing and darkening the image to remove extraneous noise I can see this is quite strange. There still seems to be an eye peering out through the round aperture on the left, while an oblong is visible on the right that has some kind of activity occurring within it. The frames are extremely interesting because of their strange design and pattern.



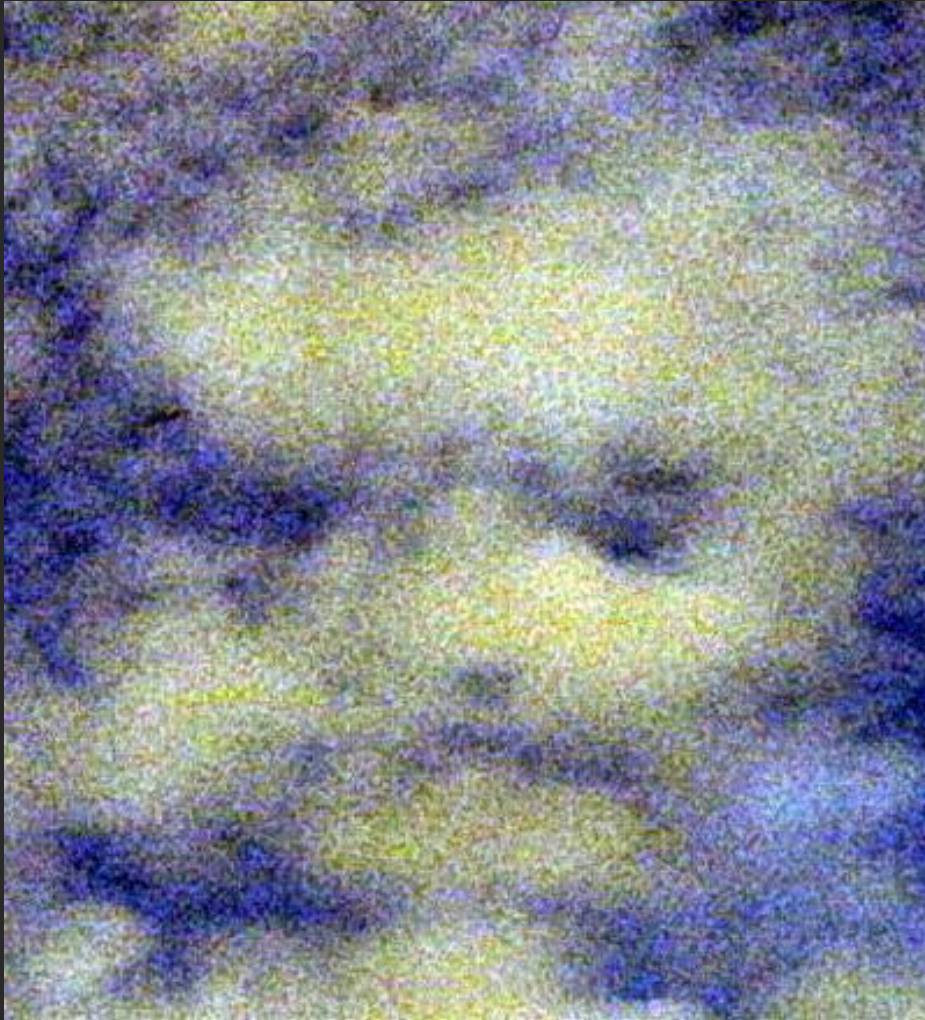
I've edited and sharpened the image extensively. I've found and edited many similar instruments that seem to have spying and recording capabilities as their main function. This is, of course, an invasion of privacy. Talented psychics are monitored in ways most people know nothing of, and would either be very shocked to learn about or outright disbelieving in their reaction to the information. And yet it's the truth, and I (like many others who are either extremely psychic, involved in fringe research, or both), have already put up with a very great deal in my long efforts to get this information in front of people so that they can learn the truth about other-dimensional life, among other things. I discuss and offer visual evidence and information in my CD/DVD 'Time Travel & Other Secret Experiments'.



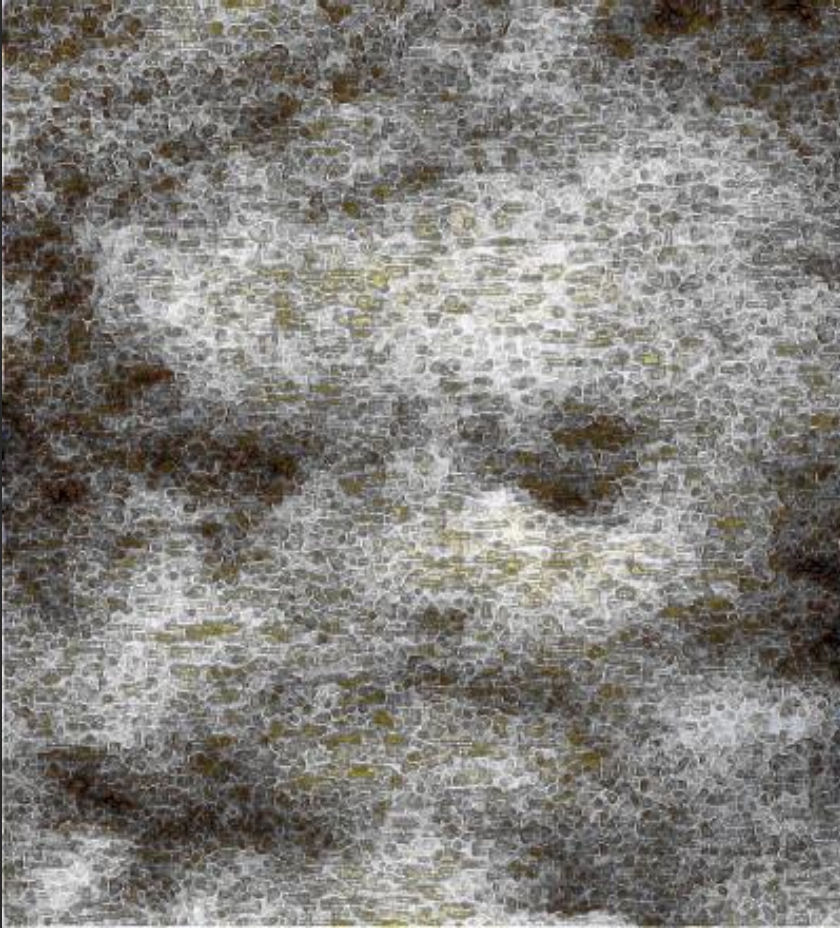
Another cloudscape, but hardly a natural one, I'm always surprised that people don't notice what's up there in the sky anymore. If you think that this looks like a flag, you're right, it's meant to. There's a lot going on in this sky, but I want to show you the face in the flag,



Seeming to be only a cloud, but in fact a projection onto a chem-cloud, the features of the man's face can be seen fairly easily, especially the eyes. Note the strange and fairly large dark flecks in the image, particularly at top left.



Sharpened,
the flecks
are very
visible, as
are the
features of
the face.



I used glowing edges in black to delineate the man's eyes. The one seen on the left is quite clear.



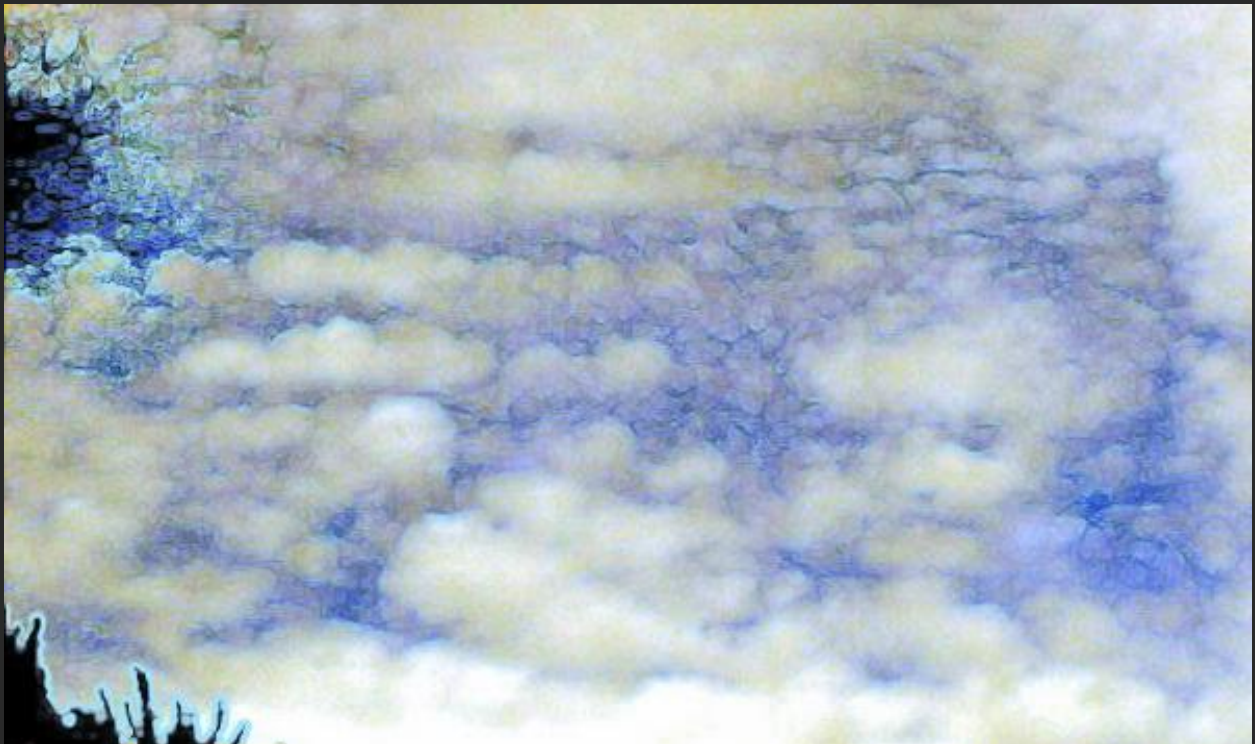
Edited a different way with color added to 'normalize' it.



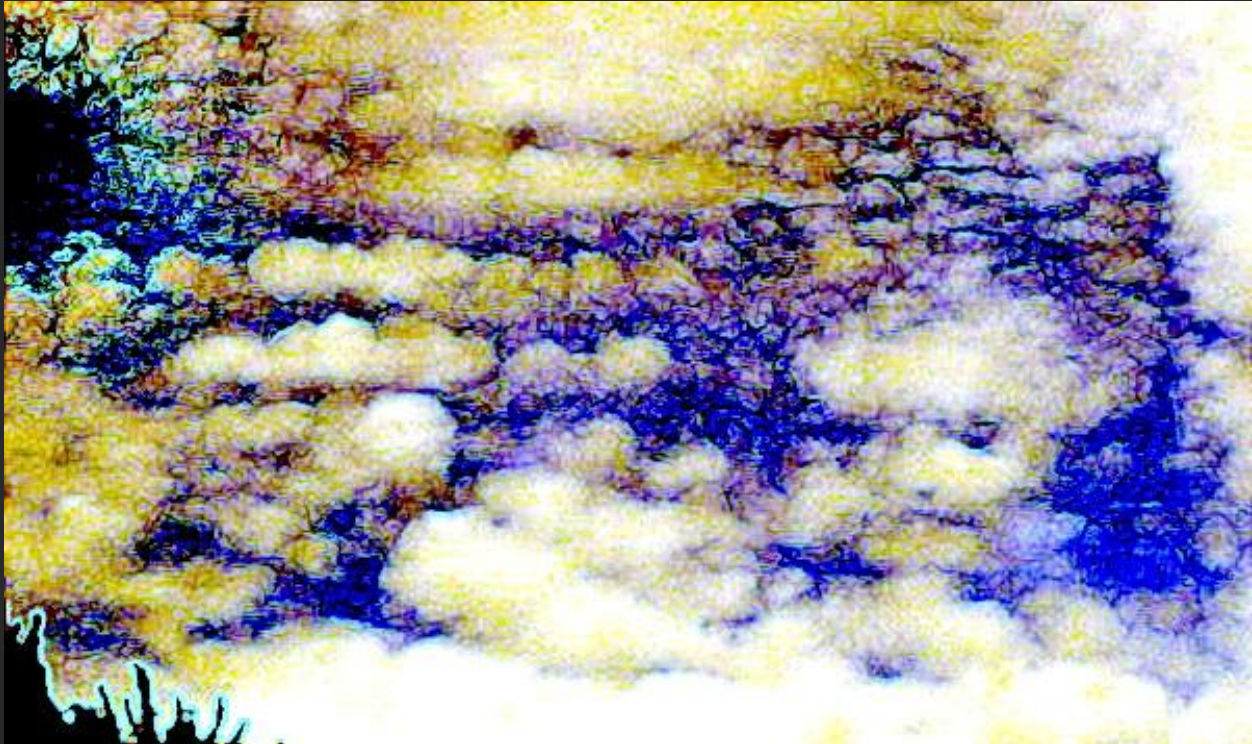
I used a threshold program to make this version. By removing color and interference, the image looks more like an illustration of someone's face. In essence, it is. This isn't a ghost in the sky; it's been placed there for a reason through holographic technology. There's something there behind the clouds that certain factions do not want you to see.



Here is the cropped 'flag'. Nature doesn't create clouds that shape, and especially not with right-angled oblongs. Note the very dark area at top left.



The image has been lightened with a pale glowing edges program. I did this to demonstrate the abnormality of the strange dark area I mentioned. What is the message behind this rude imposition?



Regardless of my heavy editing, nothing would ever make this area of sky look normal. This is one of the reasons why people don't want to look up anymore. If you're interested in finding out more about what's going on above our heads then my fascinating and informative CD/DVD 'Skyshots' will introduce you to the subject visually and provide extensive links to research material.

Email Jane Tripp august12stargate@gmail.com

©Jane Tripp

www.janetripp.com