

BLACK BAG FIGURE



This is the original black-bag shot, a photograph taken of a black plastic garbage bag. For an explanation of my black-bag experiments, please visit: <http://www.icebringer.com/blackbaggal.htm>



I believe I see what might be a figure.

Often something unusual appears on the black-bag photographs. I rotate the photo until the suspected anomaly is upright.

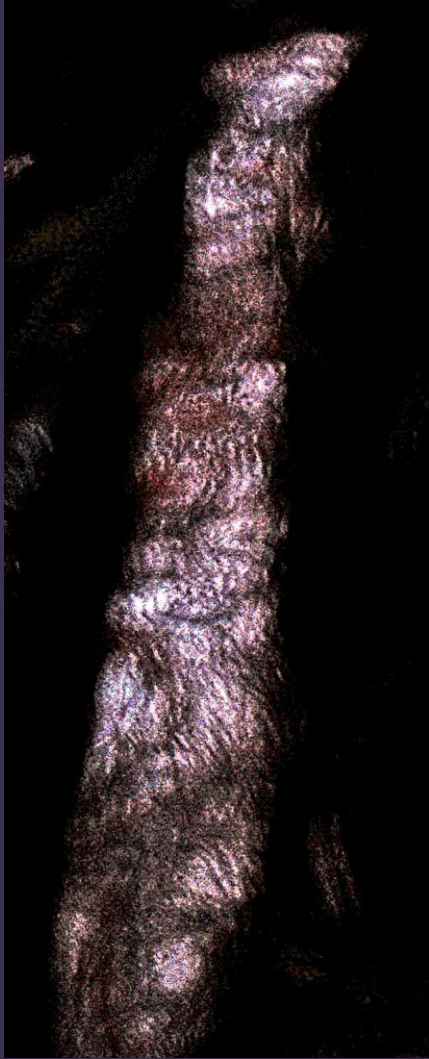
Adjusting the exposure allows me to see the image more clearly. It appears to be a figure in a long gown. I decide to continue to edit it.



I create a negative image. This technique frequently reveals further details in an image. The figure in this instance has immediately become more visible and identifiable. A tall woman can be seen standing in the image. She's standing sideways, facing to the right, but her body is angled slightly to the left. She is turning to look towards the viewer, as so many of the apparitions I get are. Her gown is long and has a train or similar that trails behind the dress. This gives the illusion that the legs are unusually long, but if you look you will see the area at the front of the gown that defines the bottom of it. The figure seems very deliberately posed. The right arm can be seen extending down and towards us. I see a container of some kind hanging at approximately knee height.



This is a
slightly
darker
image.



This is a positive
image once more.
I've sharpened it.
It looks a little like
a sketch.



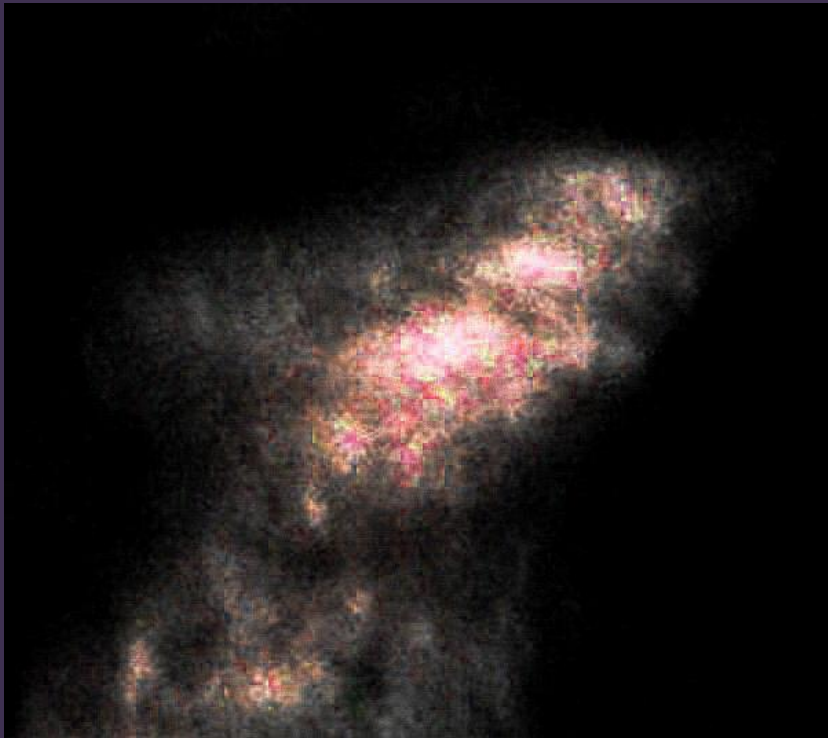
Back to the now sharpened negative image, I can still see a container or little basket and also what I believe to be a belt of some type. I'll return to these details after examining the head.



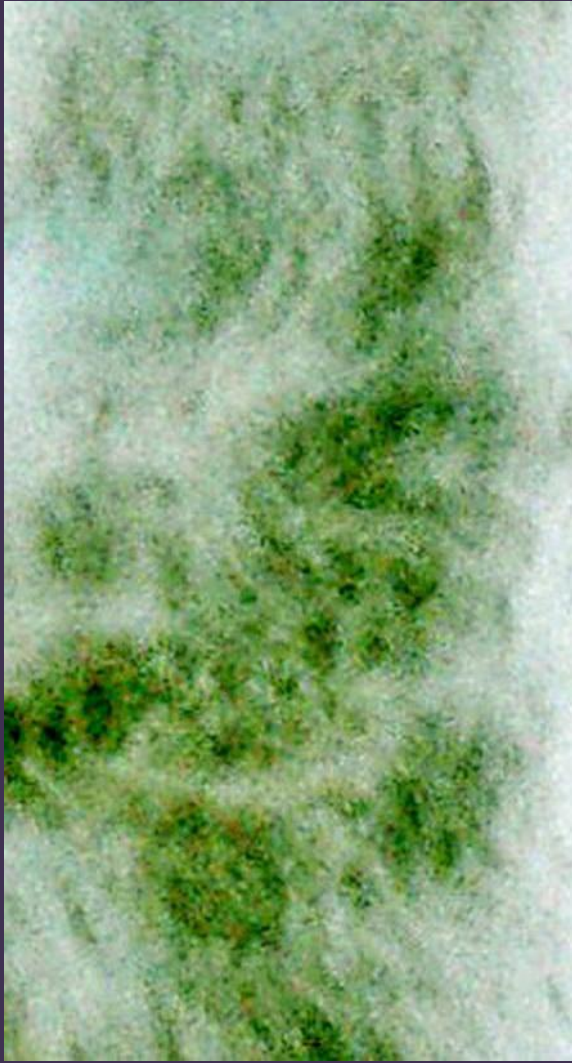
I cropped the figure's head. There are three white dots below the head that I think might be a necklace.



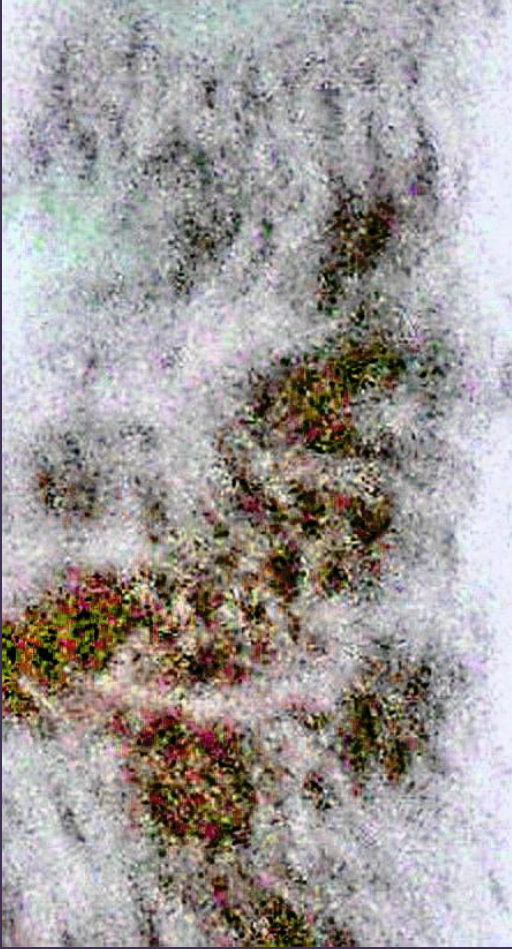
I added color to more closely approximate a flesh tone.



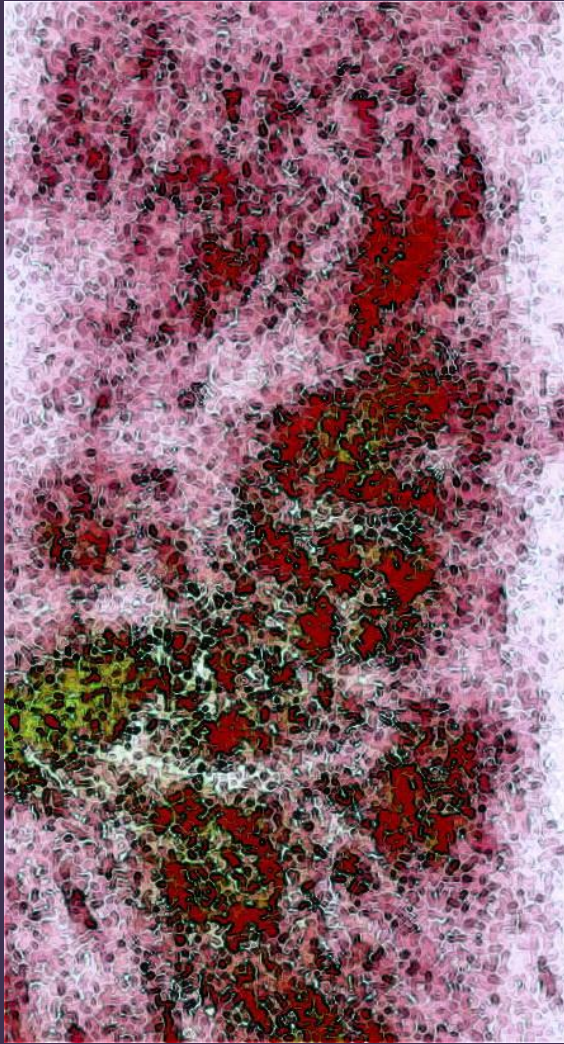
Another version, sharpened. This shows the eyes more clearly.



I cropped the area where I saw the container. I believe it to be a lit censer. I see something that looks a lot like smoke rising from it.



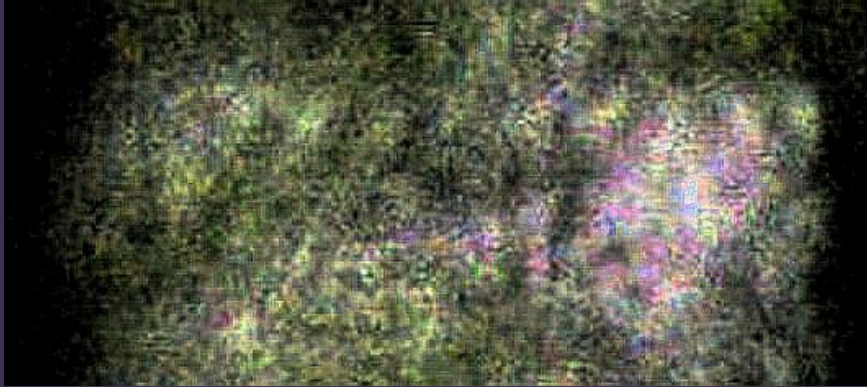
Edited, it still
looks like an
incense
container.



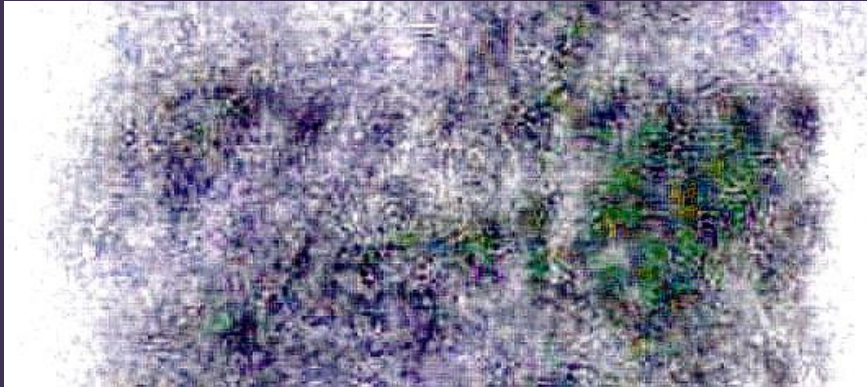
I applied an edging program that outlined everything quite well. In the course of examining the figure I found areas that appeared to be chain links that I believe are attached to the center. I didn't want to make each individual folder too long, so I have to leave a lot out.



This is the cropped area I believe to be a belt wound twice around the figures waist. There is something circular that forms part of it to be seen on the right of the image.



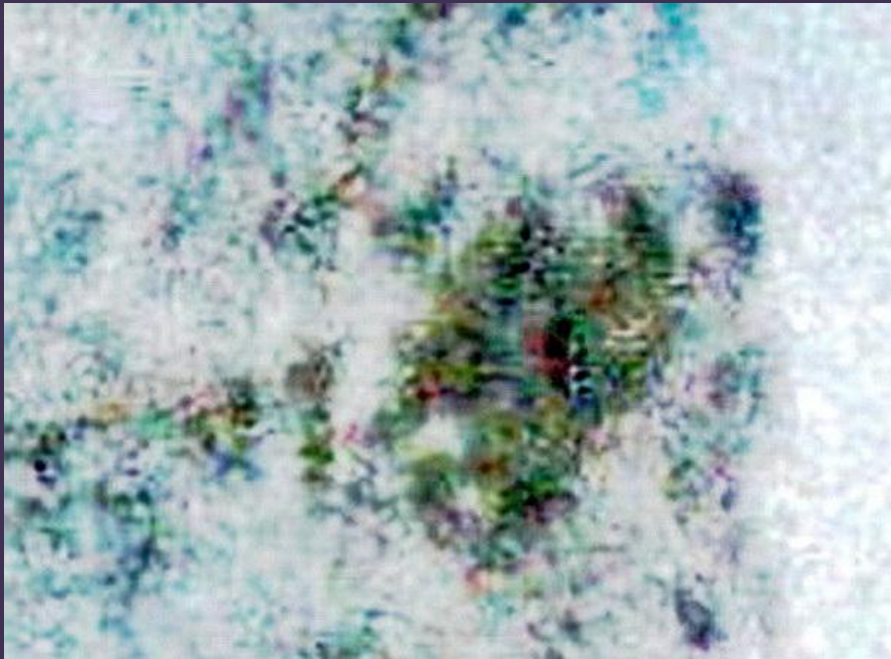
This sharpened image shows the belt as being made of a twisted or wound material. On the right is a medallion of some sort that could be part of a buckle. There is a large central circular disc with smaller ones, or petals, surrounding it.



The negative image shows some of the details.



I've edited the medallion a slightly different way to reveal more closely what it might look like if it were a real metal jewel.



This is the negative, clearly showing the raised spherical domed center of the medallion. I believe the center is connected by chain-links to the belt. Perhaps the figure represents a Grecian temple priestess. I don't know. I do know that finding details such as these on an image formed of light photographed randomly on a black plastic garbage bag is an amazing experience that raises many, many questions.

Email Jane at: august12stargate@gmail.com

©Jane Tripp 2005-2009