

GHOSTLY EYES

This is a gallery of ghostly eyes. Some of them are cropped from spirit faces but most were found alone, the rest of their faces invisible, staring down at me from trees. I get the majority of my anomalous imagery in and among trees.

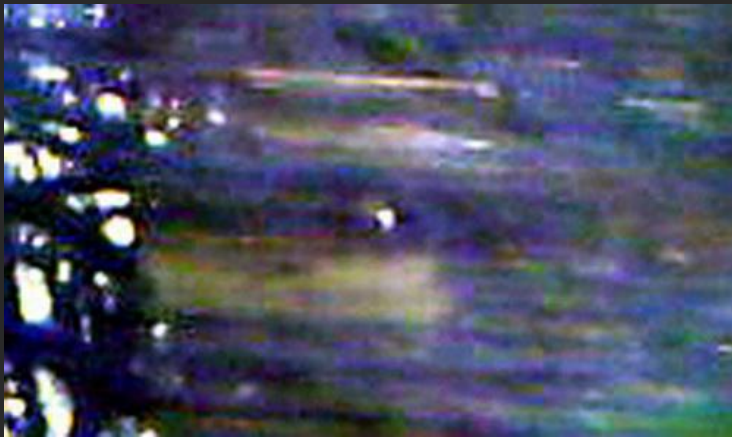
It seems to me as if we are watched a lot by both people and animals from other dimensions.

It's possible some of these folks may be practicing remote viewing and could still be in embodiment. They could also be astral travelling while their bodies are asleep. I suspect the majority are dead.

This doesn't mean that they aren't very much alive in their own dimension.

I've seen many spirit eyes in my photographs and one of the things I notice is that they still reflect light. I find that fascinating, so I'm pleased to be able to offer you the unique experience of looking directly into the eyes of those who have passed before us, both human and animal.

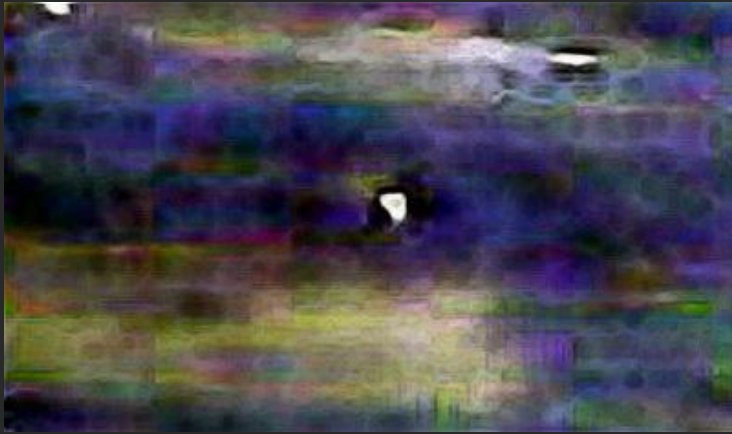
I usually show my editing process in each instance from the original photo through to the finish of my work, but I feel that here it would detract from the experience you will have. Although full original photographs can be found with most of my examples, the eyes you will see here have already been cropped from the original pictures but edited here for clarity as a demonstration.



I found this eye superimposed against foliage and branches.



I couldn't find the rest of the face that probably accompanies what appears to be a human eye.



I have applied a glowing edges program to the eye. This edges detail often too subtle to see, enhancing the picture for those who have difficulty clearly seeing images that are by nature transparent.



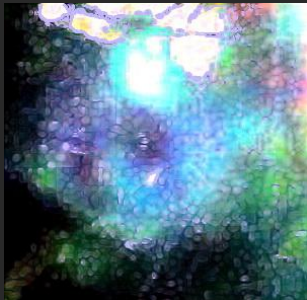
This is another eye in a tree, found in a photo taken in my old garden. It is in the middle of a sun spot, and is tinged heavily with blue.



I've reduced the blue slightly. This eye also appears human.



Cropped and enlarged, I've also heavily sharpened this image.



Here a glowing edges program is applied in a lighter color to pick out what details there are.



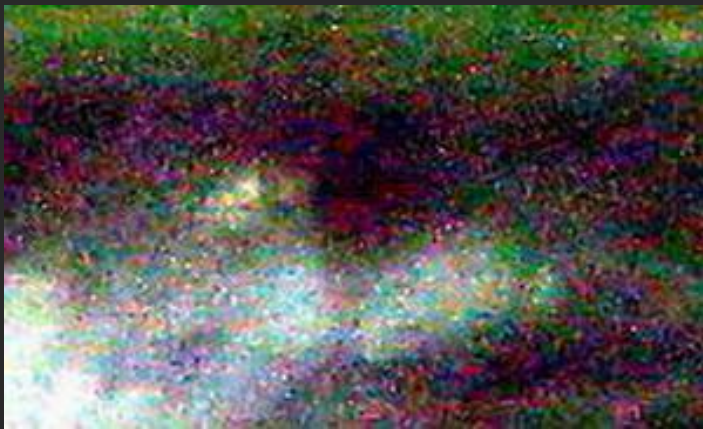
This eye appeared on a photo and it was obvious to me that this was an animal eye, most likely belonging to a dog.



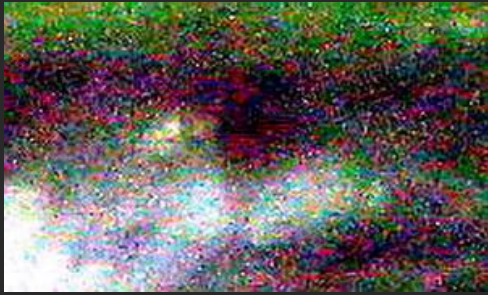
Cropped,
enlarged
and
sharpened



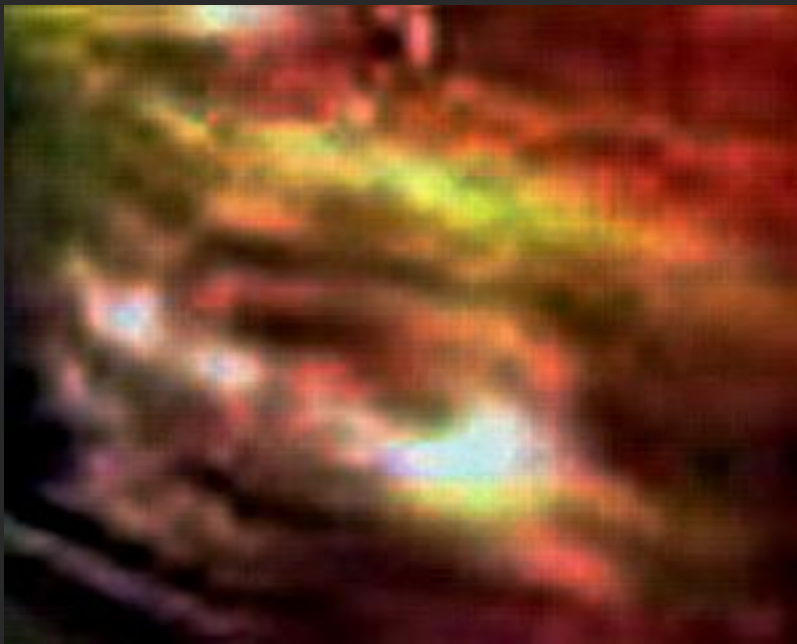
'Glowing edges'
is applied to
the image in
black.



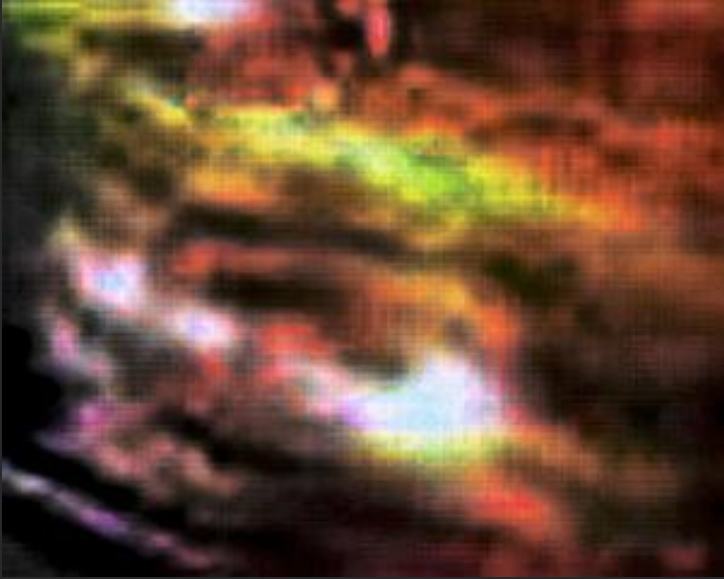
This eye is
decidedly
more feline-
looking,
although it
could also
belong to a
faery or
elemental.



This is as clear as I can make this feral looking eye.



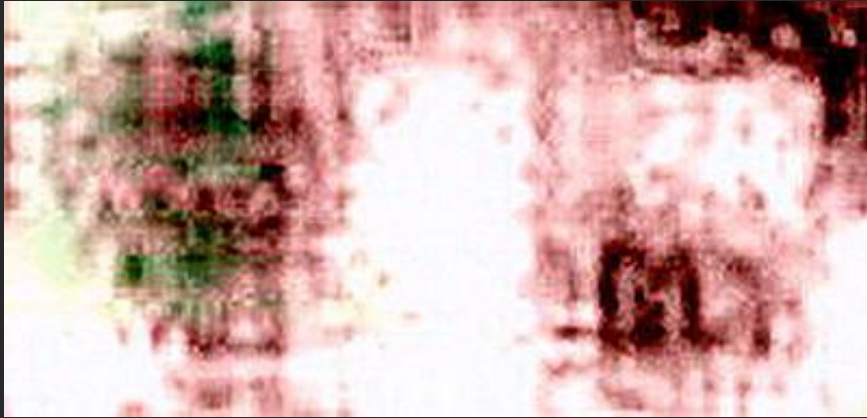
It may take you a moment to see this strange eye. It's in the center and may seem slightly disturbing to you. Some of these images may be scary to people. Sometimes things look sinister because they have been distorted slightly. I believe this happens because I'm capturing these pictures literally through time and space.



Edited and
sharpened
the eye
seems to
stare out at
us intently.



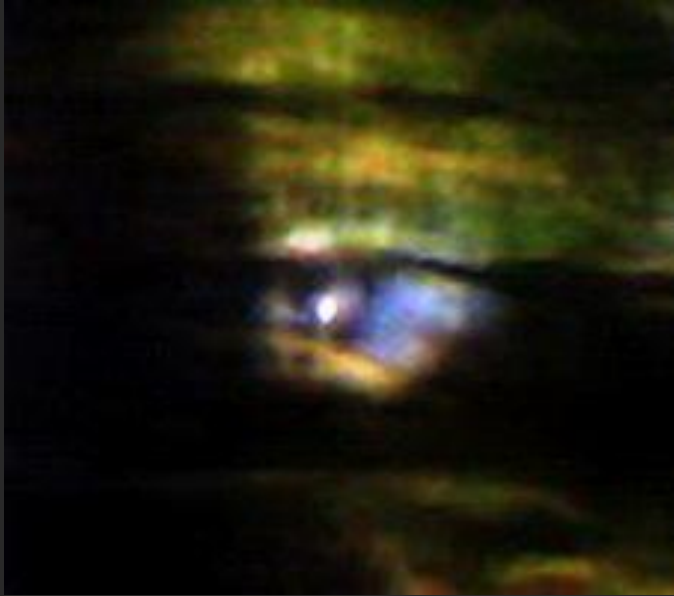
Cropped, enlarged
and treated with
glowing edges. I
won't pretend every
entity is friendly, but
neither can I usually
judge from looks
alone, so I don't
practice 'spirit
profiling'.



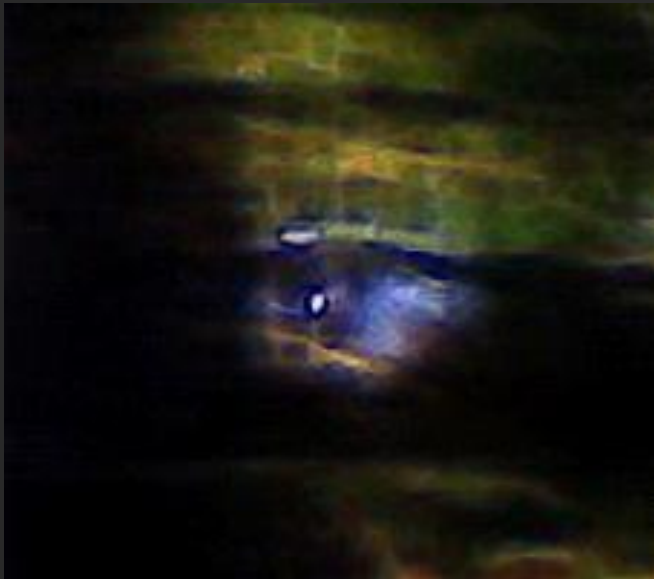
This time
a pair of
human
eyes can
be seen.



A glowing
edges
program is
applied in
brown.



This eye peeps out from behind some leaves. I always felt like I was never alone, and that I was always being watched, since I was a child; many psychics report feeling this way. Perhaps psychics and mediums are a little more aware of this continual passage of spirits back and forth between dimensions, but I suspect we're all being watched by many interested eyes, and not all are human ones by any means.



'Glowing edges' fill in details.



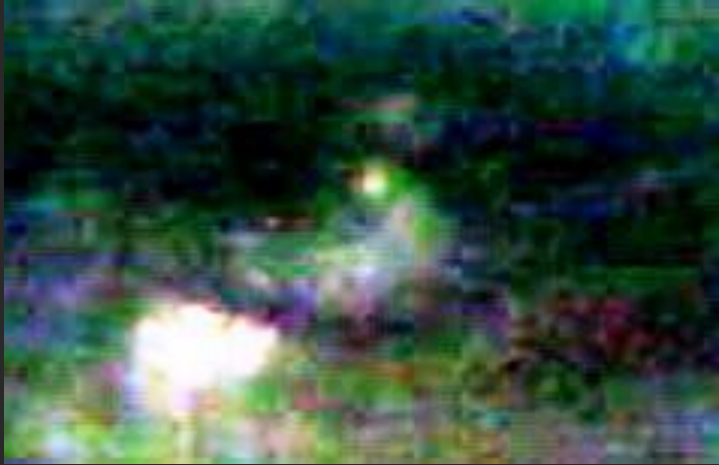
A pair of eyes frowns seriously out from a man's face.



By adjusting the color to a flesh tone it becomes easier to see the whole image because the eyes are so used to things around them looking a certain way. The eyes are an extension of the brain, and the brain is a creature of habit. These barriers have to be challenged though, if we wish to discover more about the true nature of reality.



This image took up only a tiny section of the original photograph and I had to edit it heavily because it was so small, but these are clearly eyes. Here I've lightened the image so that more details are visible, including the light in the eyes. This image is down to 'bare pixels' though, and this is as clear as I can get it.



Another eye
suspended against
greenery. The eyes I
photograph often
look amazingly real
and seem frequently
to be looking directly
towards me and the
camera.



The
'glowing
edges'
program
outlines
details of
this curious
eye.



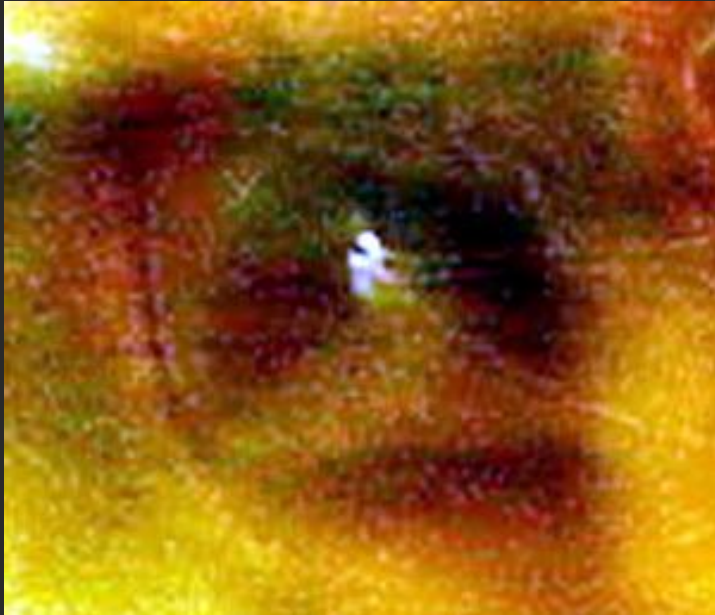
This eye is different. It was taken inside my home and is clearly not human but feline. I cropped out the image at this width because on the right is a dark shape that looks like an eye also, but human. It's unclear. We have cats at home - naturally - but this eye was very large on the photograph, bigger than a domestic cat's by far. Psychic images are not subject to the laws of time and space we know here on Earth but can appear at any size in relation to the rest of the photograph, big enough to fill the entire image or so tiny magnification is needed to view it.



It does look strangely as though a face having one feline and one human eye were gazing at me when I took the photo. I'm going to crop both eyes out separately to show you.



This is the human eye. It's not as clear as the cat eye and is seen here at the same angle as it was in reality, so it is angled down from left to right. It's smudgy but recognizable.



This cat eye is very clear, so you see other dimensions can be bridged through electronic means, in this case, my camera coupled with my ability as a photographic medium. They are a heartbeat away, a 90° dimensional turn in time and space. I photograph many cats, large and small and I believe this is a personal thing.



This is another eye taken in my back garden. There is a sun flare on the left, but the eye is in the middle of the image, just above the aqua colored sun-spot. It's very faint but visible.



I cropped this eye and edited it. I think you can see it clearly. It isn't a human eye but neither do I think its animal.



Re-cropped and sharpened I adjusted the exposure of the image. It's hazy but still visibly an eye.



Colored
edging
shows more
details.



This is quite an eye! It's just about my favorite. The face that goes with it can be seen in the "Gathering of Ghosts" section of this presentation where it is dealt with more thoroughly. It belongs to a man who is wearing eye cosmetics.



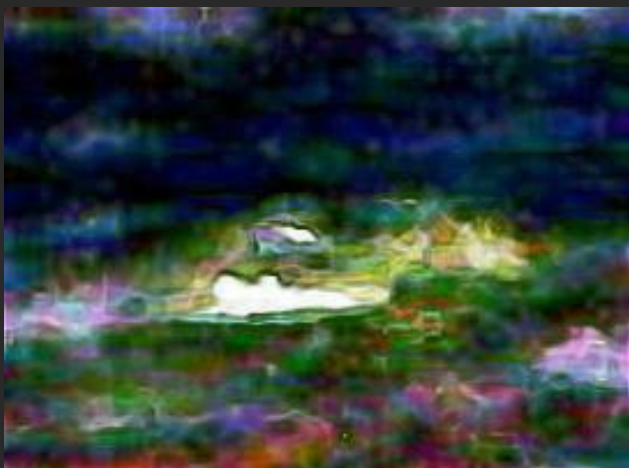
Here the outline of kohl or eyeliner is enhanced. You can see it's been drawn outwards from the outer corner of the top eyelid to end in a decorative spiral which is unusual and consequently of interest.



Most eyes seem to be looking towards the camera but this one is looking heavenwards in a manner reminiscent of religious art.



I've lightened the image so that more of the details of this upwards-gazing eye can be seen.



'Glowing edges' picks out the details of this anomalous eye.



This dark eye can be seen behind the pale vertical lines of interference seen on this image.



This image has been sharpened.



This eye is a little harder to see, but once you orient to it you can no longer miss it.



Here 'glowing edges' have accentuated this beautiful eye, which I believe belongs to a horse. I've noticed that when I photograph real, living horses there are usually human spirits hanging around them.



Here is my favorite eye, startling and enigmatic. It belongs to the spirit with the tattooed arm that can be seen in detail in the 'Gathering of Ghosts' presentation.



I've over-edited here so that you can see the colored light around this mysterious eye.



This partial face was photographed in some trees, as usual.



A fairly clear blue eye gazes off at some unseen landscape.

Email Jane Tripp: august12stargate@gmail.com

©Jane Tripp

www.janetripp.com

