

PHANTOMS OF THE RAILWAY TRACKS



This photograph may be another trans-time image, or it could have captured a 'replay' of past events.

There was no train coming when it was taken, but on-coming train lights are visible. There are two main areas of the photo that contain possible anomalies, one to the left and another on the right, seen inside the black rectangles.

We will be examining the imagery seen in the rectangle on the left in this photo-document. The sweeping motion movements are caused by camera movement.



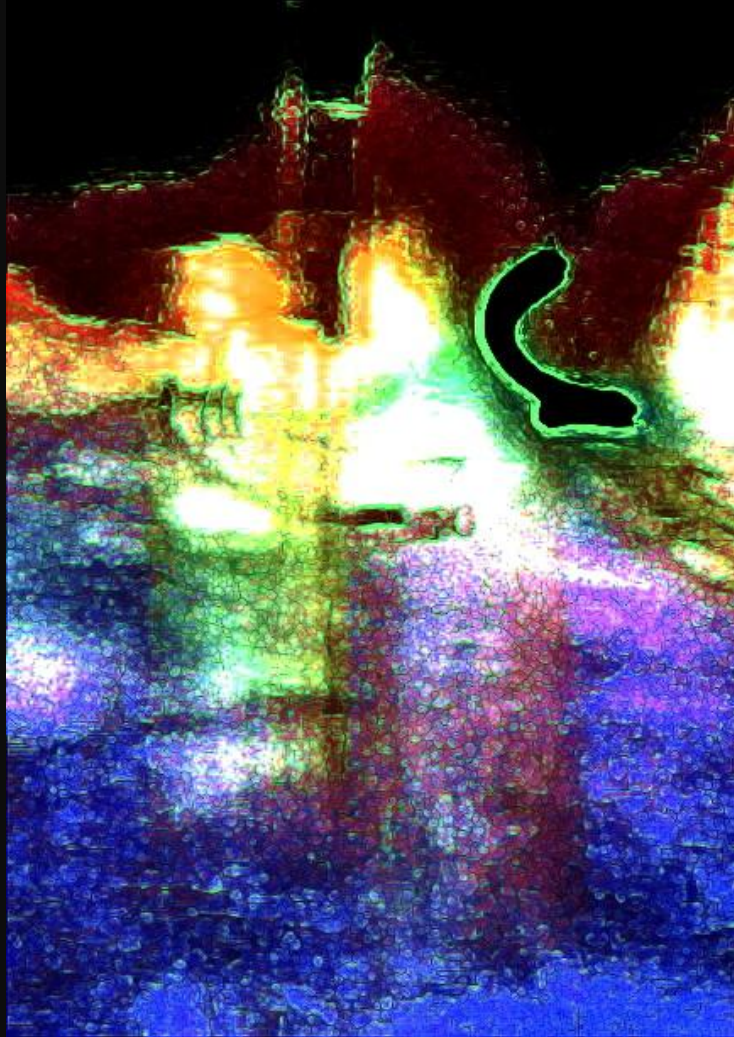
This is a very strange picture. It's cropped from a photo that was taken in Langley, not a place I usually work in. I took the photo from the open passenger window of the car (my husband was driving) just after crossing some railway tracks. The lights indicate that there's a train coming, but there wasn't, neither were there any people present. If a train had been that close the level crossing would have been closed. I can't explain the light. Two figures can be seen here.



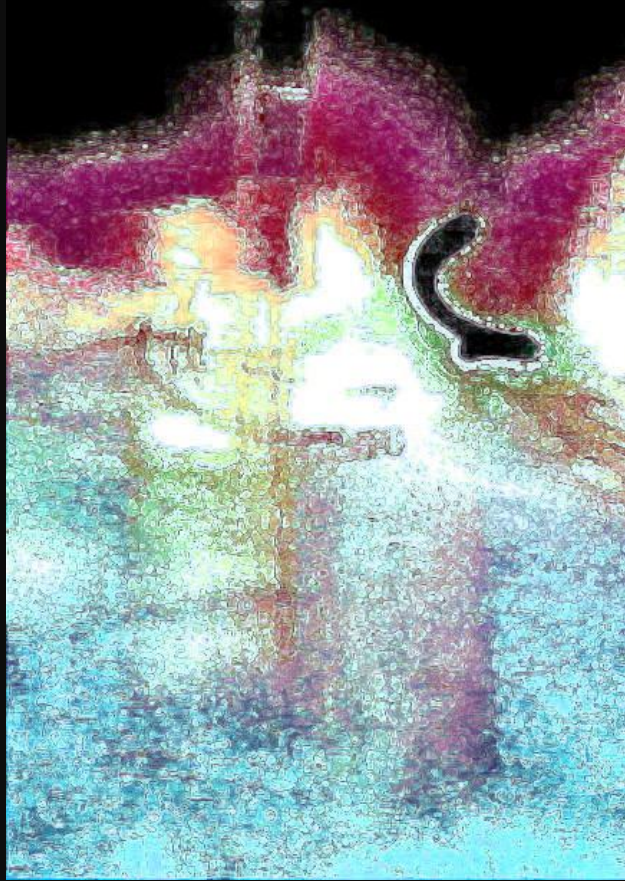
I've lightened the image. There seem to be numbers superimposed over the figure on the right. The numeral on the top seems to be 7 and underneath that, a 10.



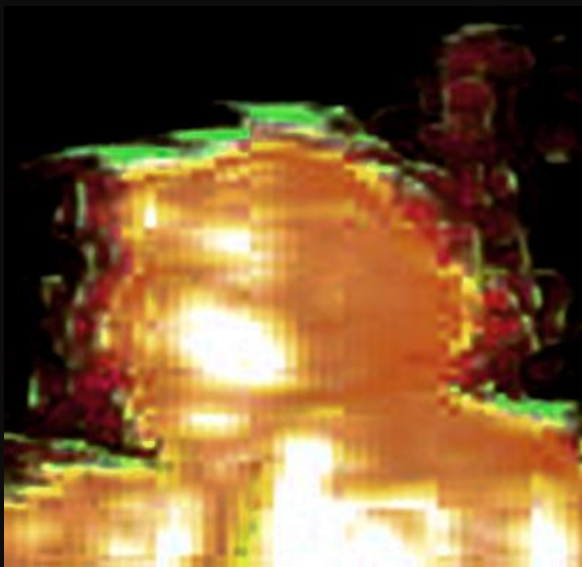
I lightened the image again. I'm going to use this version to make a negative image to try and discover more about the figures.



The negative image is a little more revealing. The figures appear to be two women, possibly dressed in clothing of about a century ago or more. They're standing together as though waiting for something or someone.



I've lightened the negative considerably, hoping to achieve some delicacy of detail.



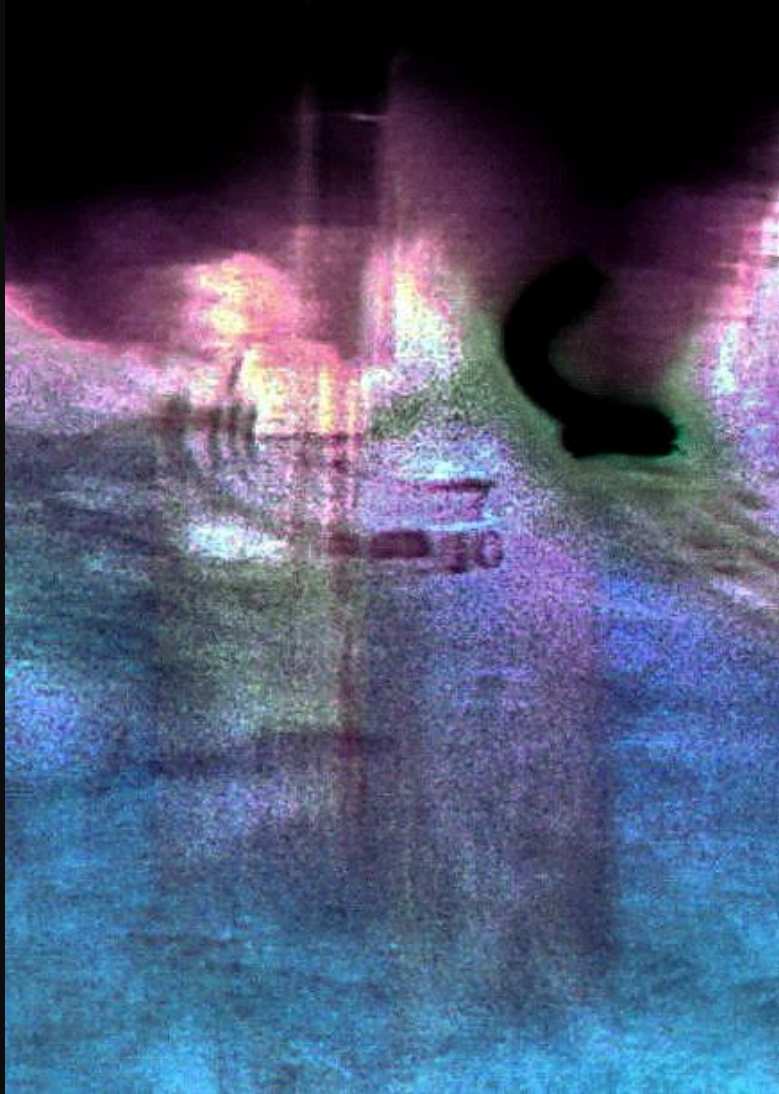
This is the head of the woman standing on the left cropped out. Appearances can be deceiving, especially with paranormal photos. This does look as though a woman is seen in profile, looking to the left. This in fact is not the case. The woman or girl is looking straight at us. She is wearing headgear of some sort, perhaps a bonnet, with a lacy or wavy trim.



Here's the image edited as clearly as I can manage. Her eyes are visibly outlined. Her hair may be braided under her hat. Note the man's head now visible behind her in the top right if it's not too rough for you to see him.



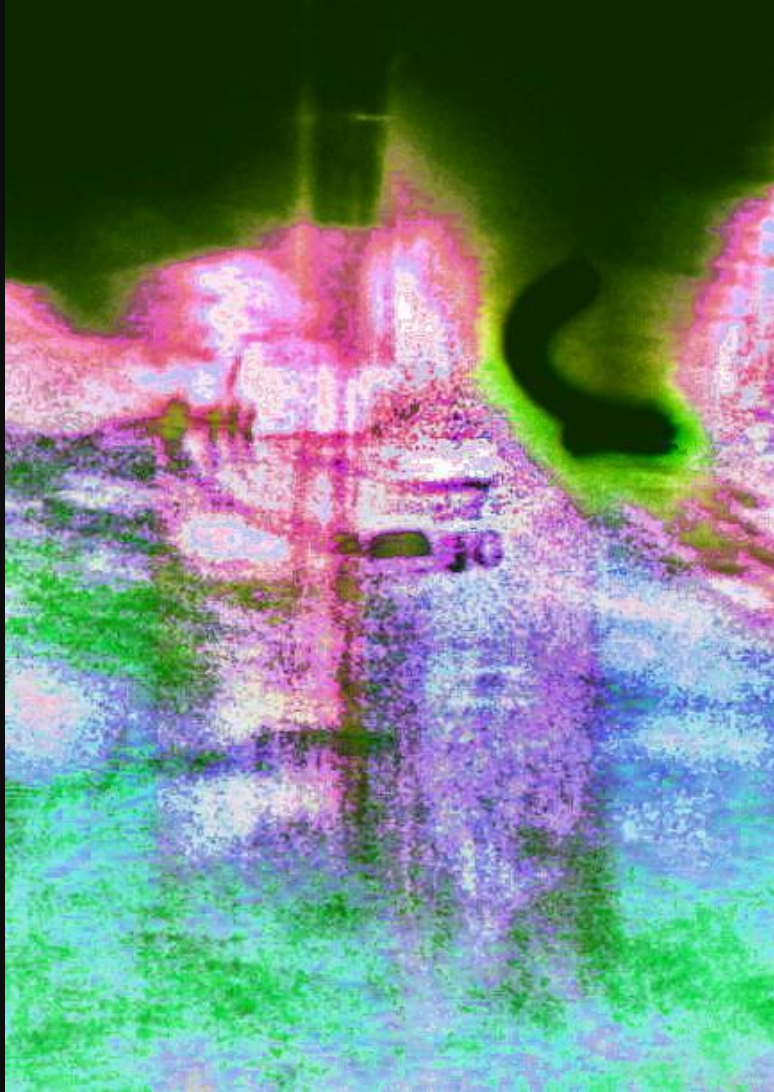
The woman's face has been edited with a 'threshold' tool. Her left eye is visible on the right.



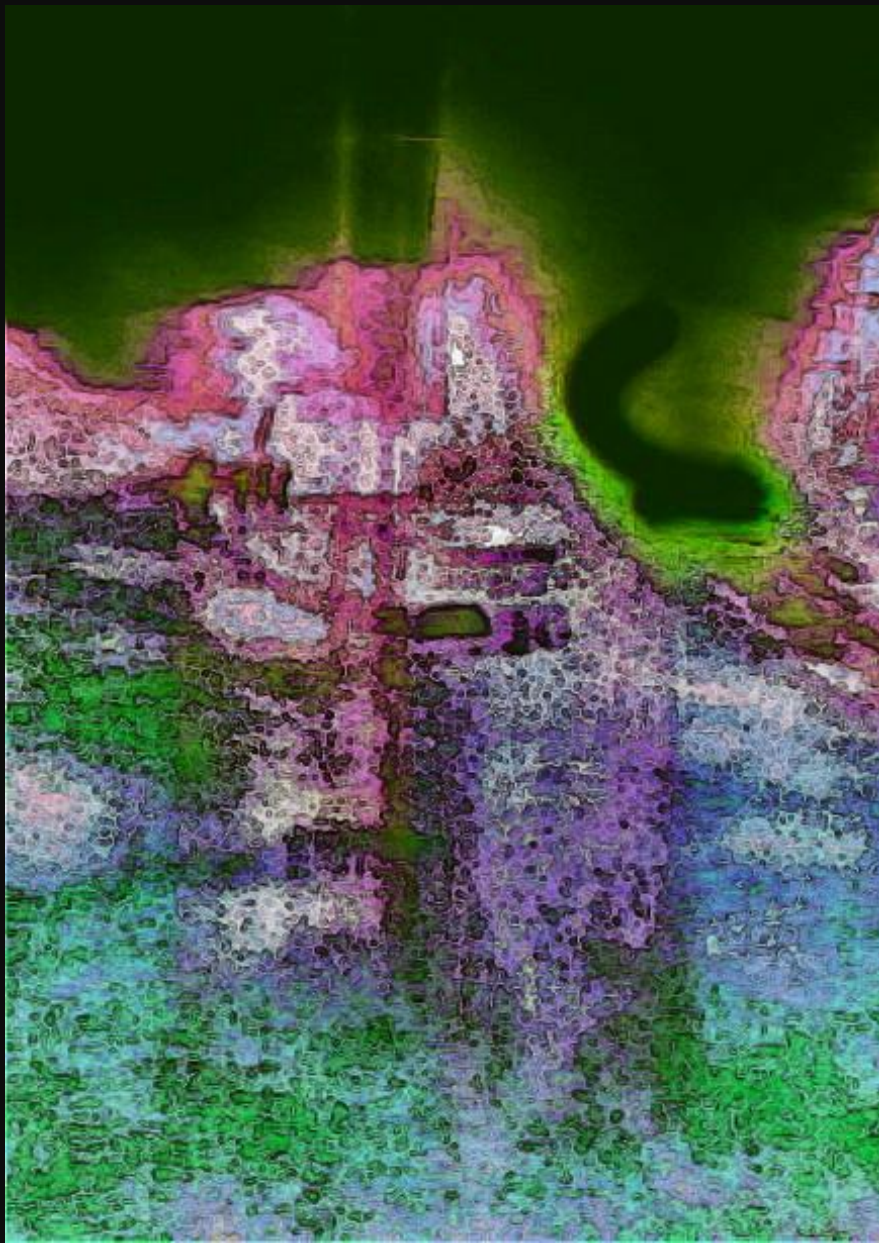
I've tried to 'normalize' the color using the negative.



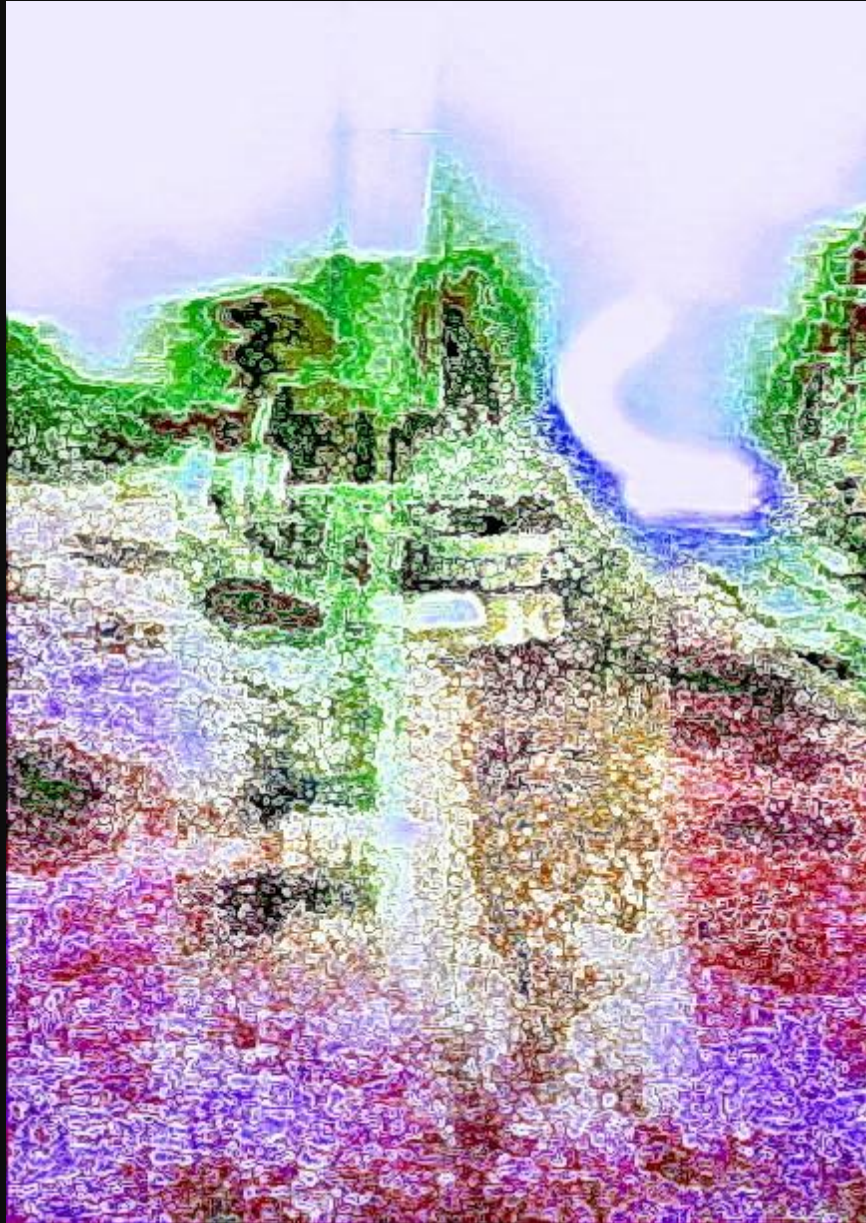
'Glowing edges' in black has made the outlines clearer.



I lightened a previous image again in an effort to discover more about these mysterious apparitions, but apart from some interesting effects I can't discover much.



'Glowing edges' are applied again. Although the figures are clearly there they are not giving up many secrets.



A positive image once more, we'll have to leave these ladies standing there with a phantom train on the tracks behind them. Who knows what stories they could tell or what the numbers 7 and 10 might have meant to them.

Email Jane Tripp: august12stargate@gmail.com

©Jane Tripp

www.janetripp.com